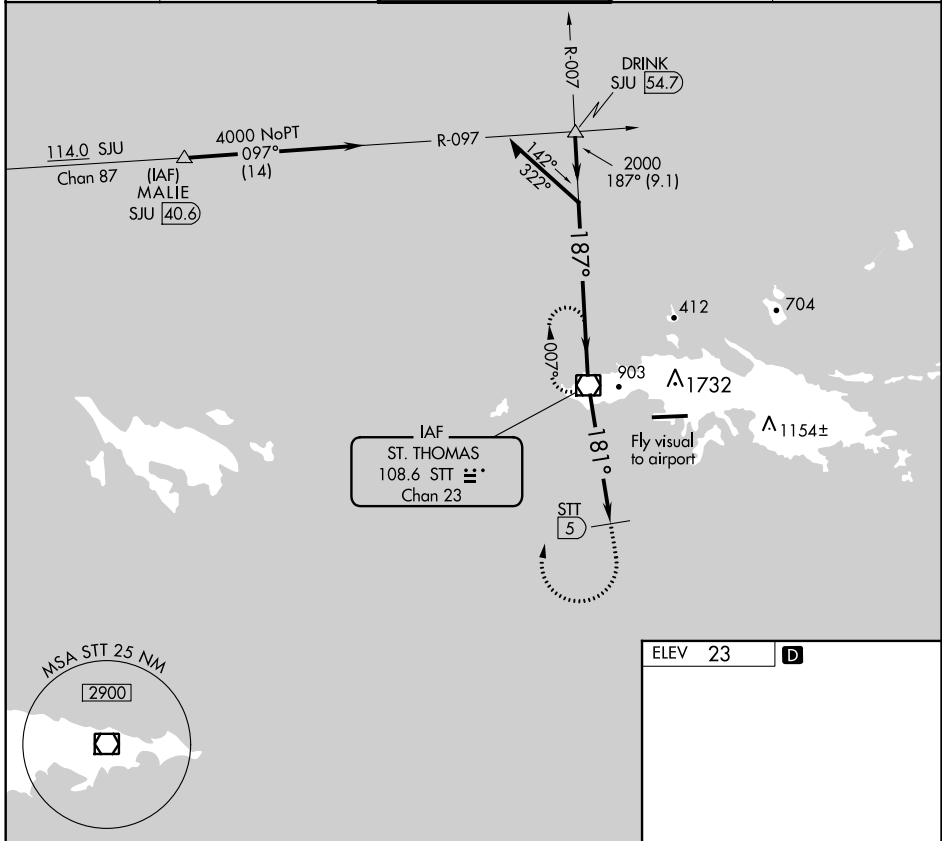


VOR/DME STT 108.6 Chan 23	APP CRS 181°	Rwy Idg TDZE Apt Elev	N/A N/A 23
---	------------------------	--------------------------	-------------------------

VOR-A
CYRIL E KING (STT)(TIST)

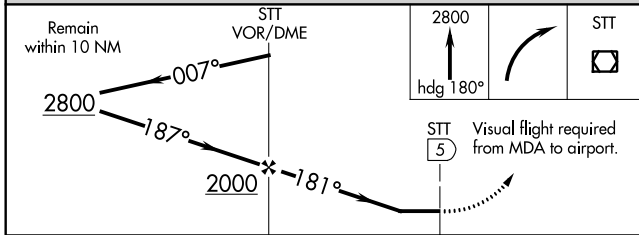
<p>CAUTION: High terrain north of Rwy 10-28 extended. Circling north of Rwy 10-28 NA. Procedure NA when control tower not in operation. Procedure NA at night.</p>	<p>MISSED APPROACH: If unable to proceed visually to airport upon descent to 1160, climb to 2800 via heading 180°, then right turn direct STT VOR/DME and hold.</p>
---	--

ATIS 124.0	SAN JUAN CENTER 128.65 279.6	ST. THOMAS TOWER ★ 118.8 (CTAF) 0 257.6 118.1 (NORTH OF ISLAND)	GND CON 121.9	UNICOM 122.95
----------------------	--	---	-------------------------	-------------------------



SE-3, 25 FEB 2021 to 25 MAR 2021

SE-3, 25 FEB 2021 to 25 MAR 2021



ELEV 23	D
---------	----------

Diagram of the runway layout:

- Rwy 01 and Rwy 28 are shown with a 7000 x 150 ft length.
- The tower (TWR) is located between the runways.

CATEGORY	A	B	C	D
CIRCLING	1160-2	1145 (1200-2)	1160-3	1145 (1200-3)

MIRL Rwy 10-28 **0**