

NDB/DME PNI <b>366</b>	APP CRS <b>252°</b>	Rwy Idg TDZE Apt Elev	<b>N/A</b> <b>N/A</b> <b>9</b>
Chan <b>47 (111.0)</b>			

# NDB-A

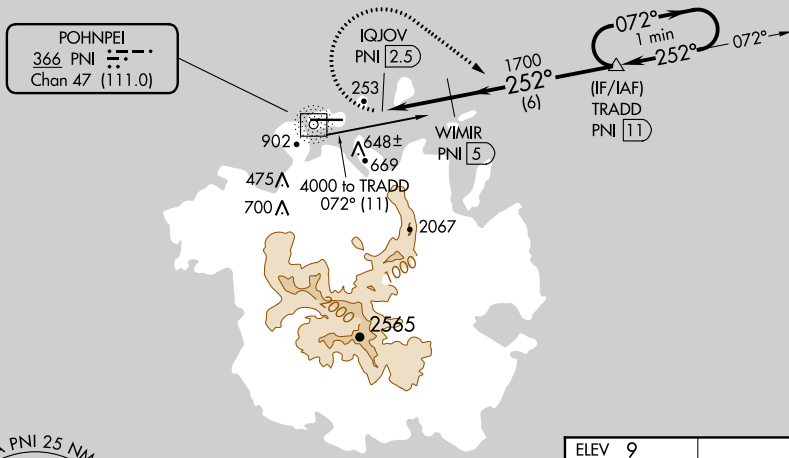
POHNPEI INTL (PNI)(PTPN)

**▼** Obtain local altimeter setting on CTAF; when not received, procedure NA.  
**▲** Circling NA south of Rwy 9-27. Procedure NA at night except by prior arrangement for runway lights. DME required. No controlled airspace below 5500 feet. Ships with maximum height of 150 feet MSL may traverse Pohnpei Channel 400 feet off approach end of runway 9, closing airport at times.

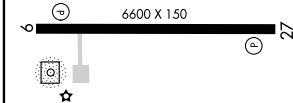
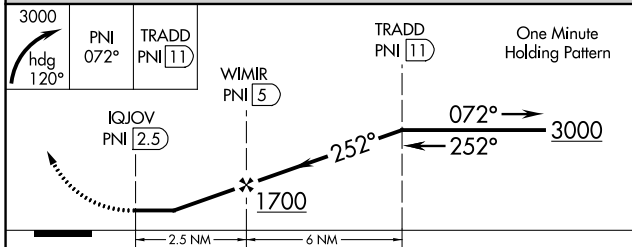
**MISSED APPROACH:** Climbing right turn to 3000 on heading 120° and on PNI NDB bearing 072° to TRADD/PNI 11 DME and hold.

POHNPEI RADIO  
**123.6 (CTAF) 0**

## DME REQUIRED



ELEV 9



CATEGORY	A	B	C	D
<b>C</b> CIRCLING	960-1¾	951 (1000-1¾)	960-3	951 (1000-3)

MIRL Rwy 9-27 0  
REIL Rwys 9 and 27