

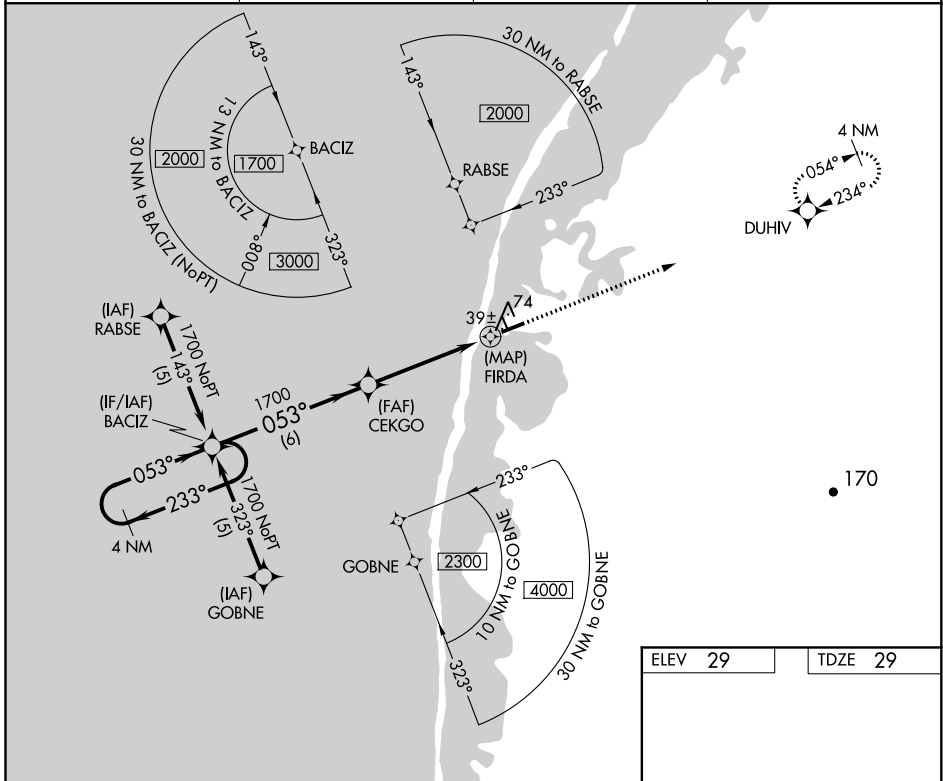
APP CRS	Rwy Idg	4500
053°	TDZE	29
	Apt Elev	29

RNAV (GPS) RWY 5

POINT LAY LRRS (PIZ)(PIIZ)

33 -33°C/-27°F	DME/DME RNP- 0.3 NA. When local altimeter setting not received, procedure NA.	MISSED APPROACH: Climb to 2000 direct DUHIV and hold.
-----------------------	---	---

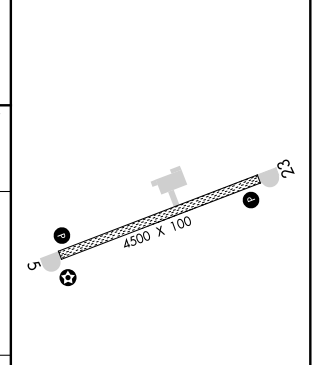
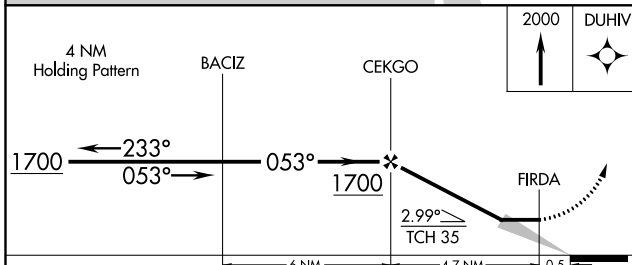
AWOS-3P 135.65	ANCHORAGE CENTER 119.65 363.25	BARROW RADIO 122.4	CTAF 122.8 0
--------------------------	--	------------------------------	-------------------------------



AK, 25 FEB 2021 to 22 APR 2021

AK, 25 FEB 2021 to 22 APR 2021

ELEV 29	TDZE 29
---------	---------



CATEGORY	A	B	C	D
LNVA MDA	380-1	351 (400-1)	380-1¼ 351 (400-1¼)	NA
CIRCLING	440-1 411 (500-1)	480-1 451 (500-1)	480-1½ 451 (500-1½)	NA

MIRL Rwy 5-23 **0**
REIL Rwy 5 and 23 **0**