

LOC/DME I-LNY	APP CRS	Rwy Idg	5000
111.1	033°	TDZE	1307
Chan 48		Apt Elev	1308

ILS or LOC RWY 3

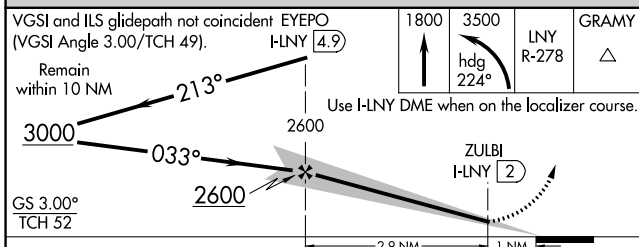
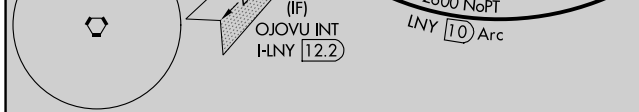
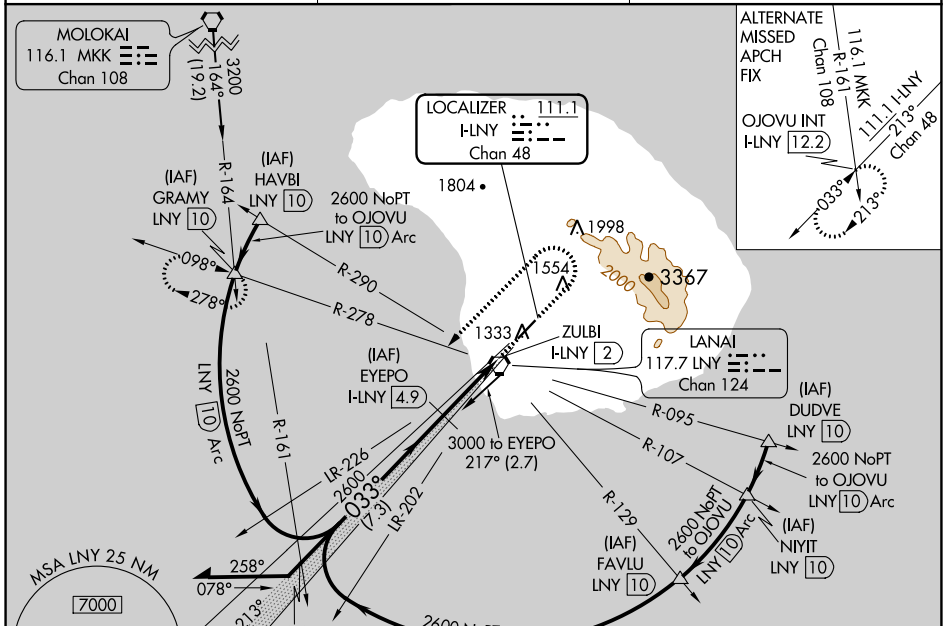
LANAI (LNY)(PHNY)

DME required.

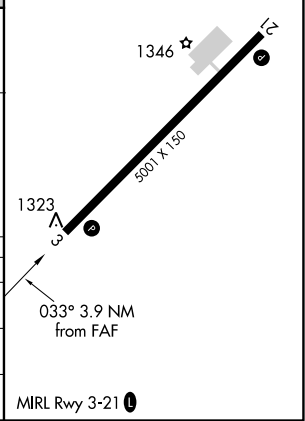
▼ Circling Rwy 21 NA at night. Autopilot coupled approach NA below 1505. When local altimeter setting not received, procedure ▲ NA NA, except for operators with approved weather reporting service.

MISSED APPROACH: Climb to 1800 then climbing left turn to 3500 on heading 224° and LNY VORTAC R-278 to GRAMY INT/LNY VORTAC 10 DME and hold.

AWOS-3P 118.375	HCF CENTER 119.3 307.1	CTAF 122.9
---------------------------	----------------------------------	----------------------



ELEV 1308	D TDZE 1307
-----------	--------------------



CATEGORY	A	B	C	D
S-ILS 3		1588-1	281 (300-1)	
S-LOC 3		1580-1¼	273 (300-1¼)	
CIRCLING	1900-1¼ 592 (600-1¼)	1940-1¼ 632 (700-1¼)	1960-1¾ 652 (700-1¾)	1960-2 652 (700-2)

PAC, 25 FEB 2021 to 22 APR 2021

PAC, 25 FEB 2021 to 22 APR 2021