

APP CRS	Rwy Idg	<b>2509</b>
<b>070°</b>	TDZE	<b>1643</b>
	Apt Elev	<b>1643</b>

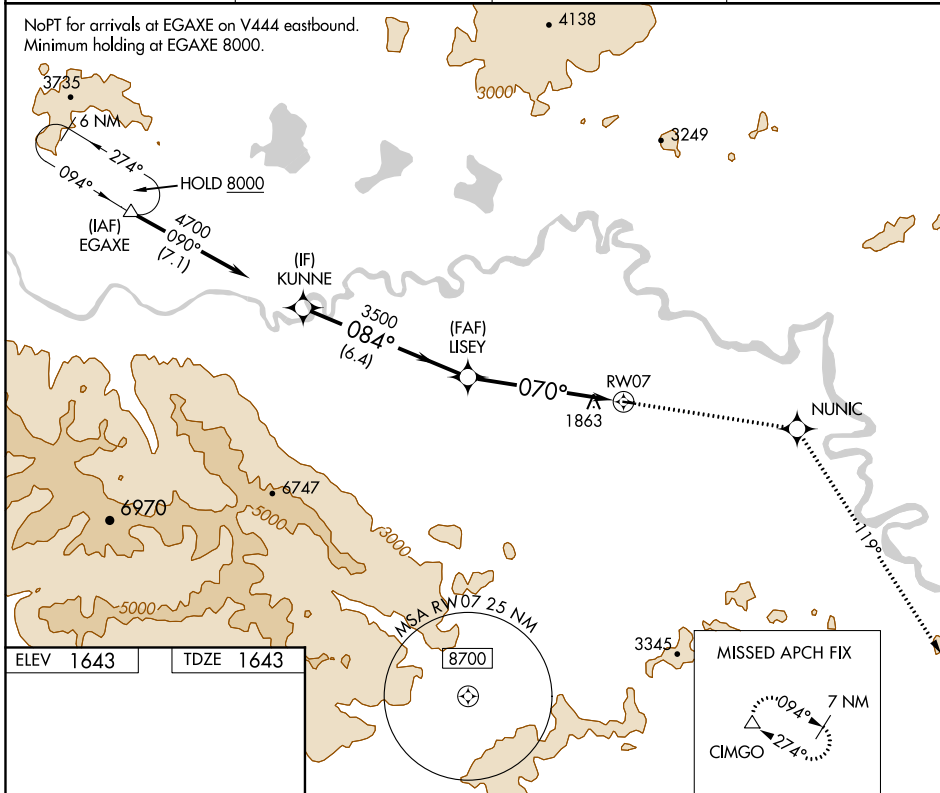
# RNAV (GPS) RWY 7

TOK JUNCTION (6K8) (PFTO)

NA	DME/DME RNP-0.3 NA. Use Northway altimeter setting.	MISSED APPROACH: Climb to 8000 direct NUNIC and via 119° track to CIMGO and hold, continue climb-in-hold to 8000.

ORT/PAOR ASOS <b>135.4</b>	ANCHORAGE CENTER <b>126.55 323.0</b>	NORTHWAY RADIO <b>122.4</b>	UNICOM <b>122.8</b> (CTAF)
-------------------------------	---	--------------------------------	-------------------------------

NoPT for arrivals at EGAXE on V444 eastbound.  
Minimum holding at EGAXE 8000.



ELEV 1643	TDZE 1643
-----------	-----------

MIRL Rwy 7-25

CATEGORY	A	B	C	D
LNAV MDA	2500-1 857 (900-1)	2500-1¼ 857 (900-1¼)	2500-2½ 857 (900-2½)	NA
CIRCLING	2540-1¼	897 (900-1¼)	2540-2¾ 897 (900-2¾)	NA

AK, 25 FEB 2021 to 22 APR 2021

AK, 25 FEB 2021 to 22 APR 2021