

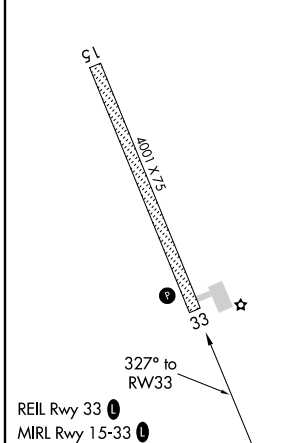
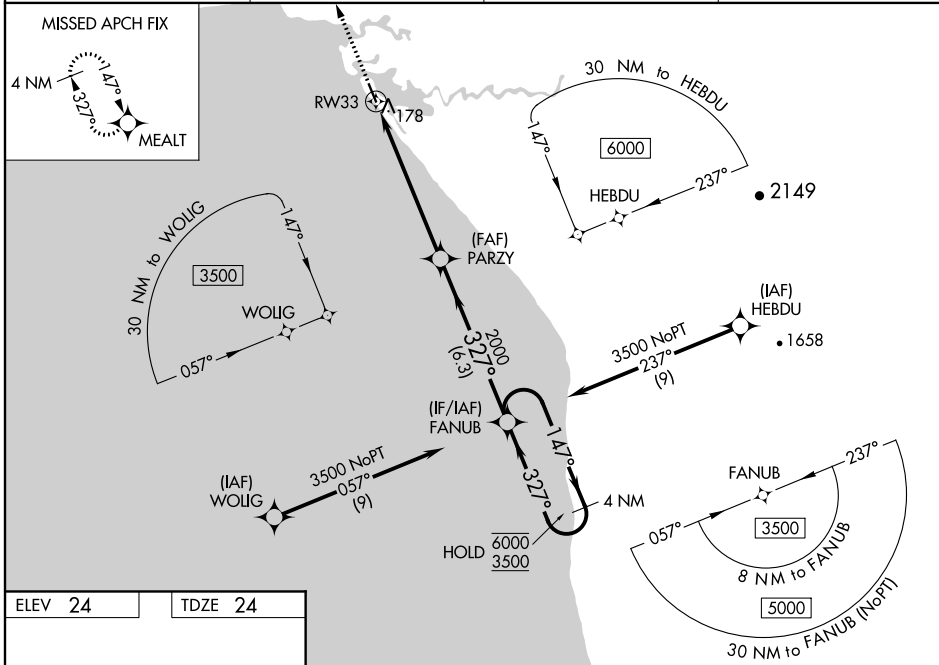
WAAS CH <b>69413</b> <b>W33A</b>	APP CRS <b>327°</b>	Rwy Idg TDZE <b>24</b> Apt Elev <b>24</b>	<b>4001</b>
--	------------------------	---	-------------

# RNAV (GPS) RWY 33

SHAKTOOLIK (2C7) (PFSH)

RNP APCH.	Baro-VNAV and VDP NA when using Unalakleet altimeter setting. For uncompensated Baro-VNAV systems, LNAV/VNAV NA below -20°C or above 54°C. When local altimeter setting not received, use Unalakleet altimeter setting and increase all DA 72 feet and all MDA 80 feet and increase LNAV/VNAV all Cats visibility 1/8 SM and LNAV Cat C and D and Circling Cat D visibility 1/4 SM.	MISSED APPROACH: Climb to 3000 direct MEALT and hold.
-----------	---	---

AWOS-3P <b>124.175</b>	ANCHORAGE CENTER <b>135.7 335.5</b>	NOME RADIO <b>122.3</b>	UNICOM <b>122.8 (CTAF) 0</b>
---------------------------	--	----------------------------	---------------------------------



3000	MEALT	VGSi and RNAV glidepath not coincident (VGSi Angle 3.00/TCH 25).		FANUB	4 NM Holding Pattern
*LNAV only.		1.2 NM to RW33	4.9 NM	6.3 NM	147° → 6000 ← 327° 3500
					GP 3.00° TCH 40

CATEGORY	A	B	C	D
LPV DA		274-1	250 (300-1)	
LNAV/VNAV DA		339-1	315 (400-1)	
LNAV MDA	440-1	416 (500-1)	440-1½	416 (500-1½)
<input checked="" type="checkbox"/> CIRCLING	480-1	456 (500-1)	480-1½ 456 (500-1½)	740-2¼ 716 (800-2¼)

AK, 25 FEB 2021 to 22 APR 2021

AK, 25 FEB 2021 to 22 APR 2021