

APP CRS	Rwy Idg	3300
066°	TDZE	115
	Apt Elev	115

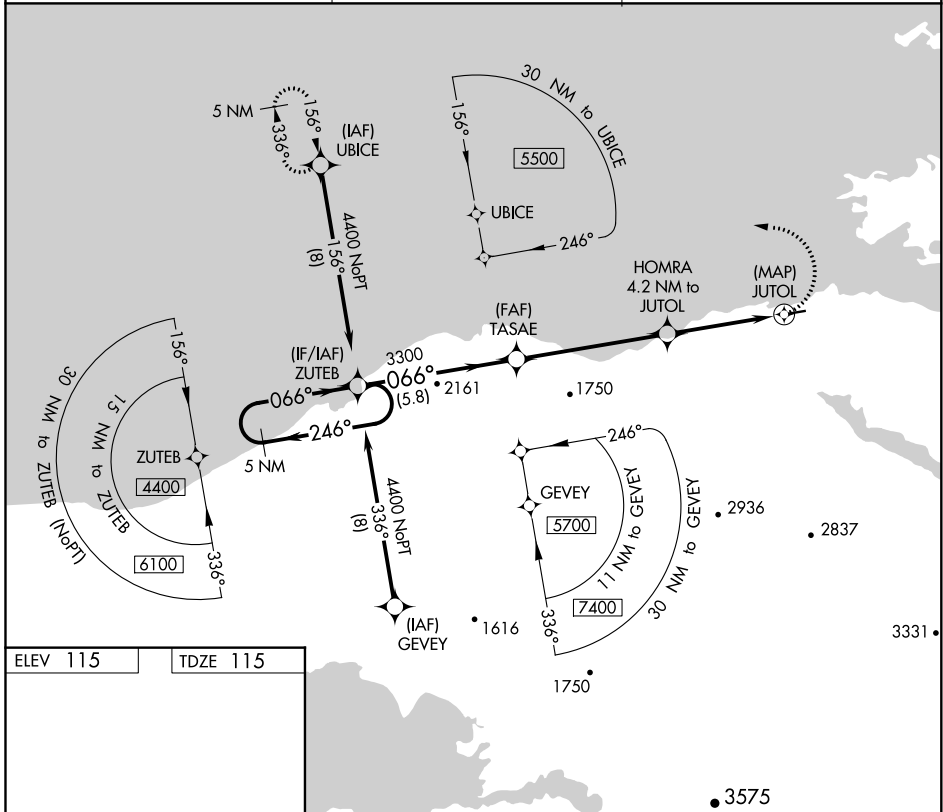
RNAV (GPS) RWY 7

KOKHANOK (9K2) (PFFK)

NA Rwy 7 helicopter visibility reduction below 1 SM NA.
 DME/DME RNP-0.3 NA. Use Iliamna altimeter setting.
 Procedure NA at night.

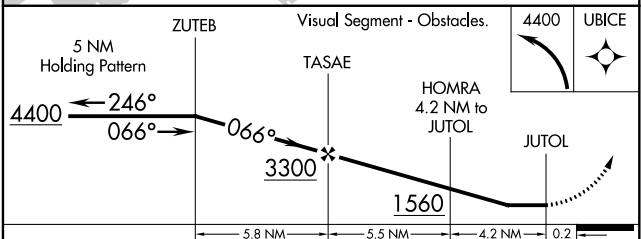
MISSED APPROACH: Climbing left turn to 4400 direct UBICE and hold, continue climb-in-hold to 4400.

III/PAIL ASOS 134.95	ANCHORAGE CENTER 118.8	CTAF 122.9
--------------------------------	----------------------------------	----------------------



ELEV 115	TDZE 115
----------	----------

REIL Rws 7 and 25 **1**
 MIRL Rwy 7-25 **1**



CATEGORY	A	B	C	D
LNAV MDA	820-1	705 (800-1)	820-2	705 (800-2)
CIRCLING	1040-1¼ 925 (1000-1¼)	1100-1½ 985 (1000-1½)	1100-3	985 (1000-3)

AK, 25 FEB 2021 to 22 APR 2021

AK, 25 FEB 2021 to 22 APR 2021