

APP CRS	Rwy Idg	N/A
166°	TDZE	N/A
	Apt Elev	22

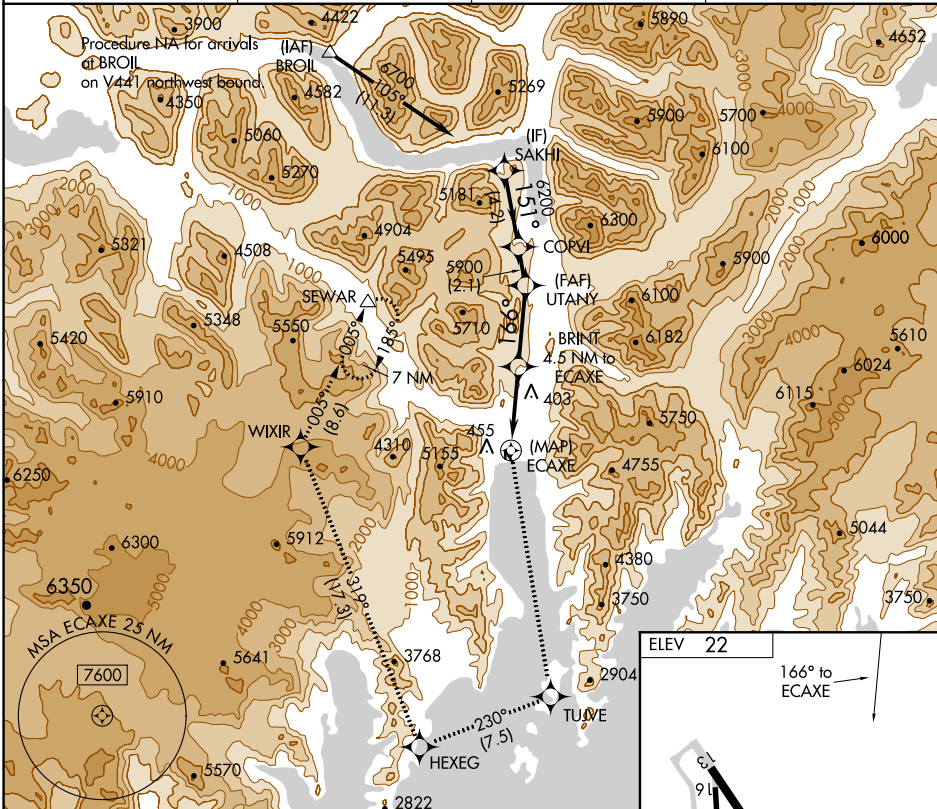
RNAV (GPS)-A

SEWARD (SWD) (PAWD)

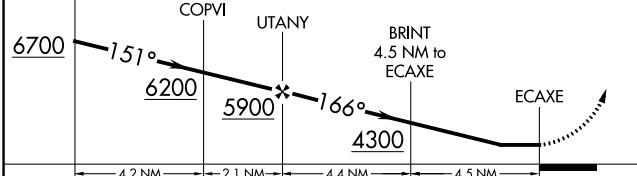
⚠ When local altimeter setting not received, procedure NA. Circling NA southwest of Rwy 13 and 34. Procedure NA at night. DME/DME RNP-0.3 NA. Helicopter visibility reduction below 1 SM NA.

MISSED APPROACH: Climb to 9500 direct TUJVE and on track 230° to HEXEG and on track 319° to WIXIR and on track 005° to SEWAR and hold.

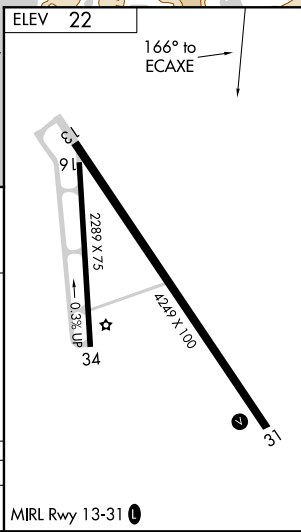
ASOS 135.2	ANCHORAGE CENTER 119.7 269.0	KENAI RADIO 122.6	CTAF 122.9
----------------------	----------------------------------------	-----------------------------	----------------------



SAKHI	9500	TUJVE	tr 230°	HEXEG	tr 319°	WIXIR	tr 005°	SEWAR
-------	------	-------	---------	-------	---------	-------	---------	-------



CATEGORY	A	B	C	D
CIRCLING	2660-1¼ 2638 (2700-1¼)	2660-1½ 2638 (2700-1½)	NA	



AK, 25 FEB 2021 to 22 APR 2021

AK, 25 FEB 2021 to 22 APR 2021