

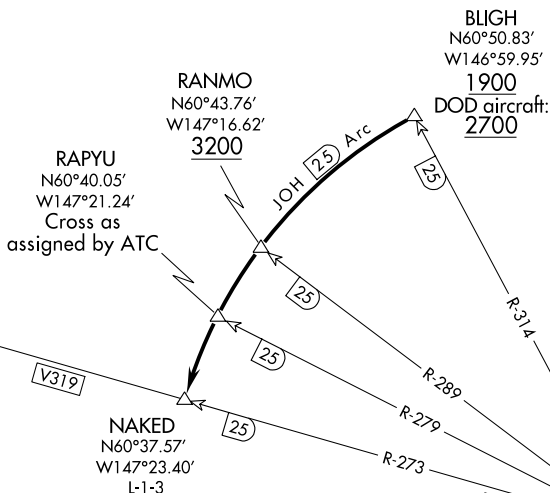
(NAKED6.NAKED) 16203  
**NAKED SIX DEPARTURE**

SL-6213 (FAA)

VALDEZ PIONEER FIELD (VDZ) (PAVD)  
 VALDEZ, ALASKA

ANCHORAGE CENTER  
 119.3 269.4  
 JUNEAU RADIO  
 122.2  
 CTAF  
 122.9

**TOP ALTITUDE:  
 ASSIGNED BY ATC**



**TAKEOFF MINIMUMS**  
 Rwy 6, 24: 2000-3 (DOD aircraft 3500-3)  
 NA at night.

NOTE: Do not proceed CCW  
 beyond BLIGH without ATC clearance.  
 NOTE: DME required.

NOTE: Chart not to scale.

**DEPARTURE ROUTE DESCRIPTION**

Proceed in visual conditions from Valdez airport to BLIGH (JOH R-314/25 DME) to cross BLIGH at or above 1900' (visual conditions must be maintained from takeoff until established over BLIGH at or above 1900') (DOD aircraft: Cross BLIGH at or above 2700'). Proceed CCW on JOH 25 DME arc to NAKED; cross RANMO at or above 3200'. Cross RAPYU as assigned by ATC. Thence via (assigned route).

**NAKED SIX DEPARTURE**  
 (NAKED6.NAKED) 21JUL16

VALDEZ, ALASKA  
 VALDEZ PIONEER FIELD (VDZ) (PAVD)

AK, 25 FEB 2021 to 22 APR 2021

AK, 25 FEB 2021 to 22 APR 2021