

SHEMYA I., ALEUTIAN I., ALASKA

VOR/DME or TACAN RWY 28

VORTAC SYA 109.0 Chan 27	APCH CRS 280°	Rwy ldg 10,004 TDZE 88 Arprt Elev 98
--	-------------------------	---

AL-1246 [USAF]

EARECKSON AS (PASV)

* When ALS inop, increase CAT AB vis to 1 mile,
CAT CDE vis to 1½ miles
** Circling Not Authorized in area N of Rwy 10-28.

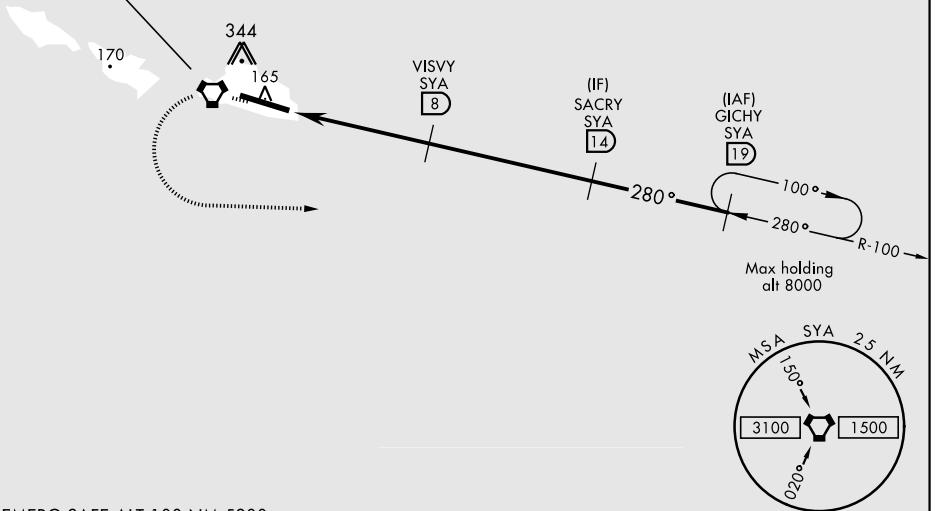


MISSED APPROACH: Climbing left turn to 3000, intercept SYA R-100 direct GICHY and hold.

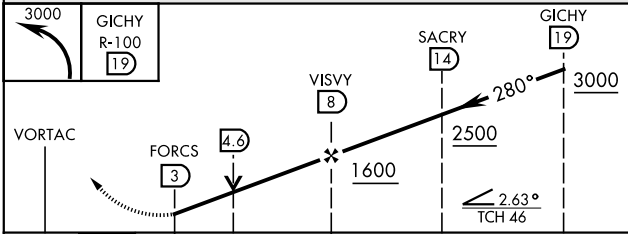
ANCHORAGE CENTER 119.1 339.8	CTAF 127.2 352.05	ASOS 135.65
--	-----------------------------	-----------------------

CAUTION: Numerous obstructions in area N of Rwy 10-28.
Missed approach requires use of RNAV or ATC RADAR monitoring.

SHEMYA
109.0 SYA
Chan 27

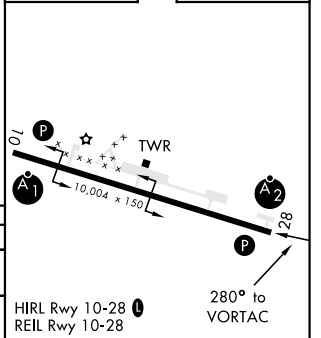


EMERG SAFE ALT 100 NM 5200



ELEV 98	TDZE 88
---------	---------

CATEGORY	A	B	C	D	E
S-28 *	620-¾ 532 (600-¾)		620-1¼ 532 (600-1¼)		
CIRCLING **	620-1 523 (600-1)		620-1½ 523 (600-1½)	660-2 563 (600-2)	



SHEMYA I., ALEUTIAN I., ALASKA

52°43'N-174°07'E

EARECKSON AS (PASV)

Amdt 5 10OCT19

VOR/DME or TACAN RWY 28

AK, 25 FEB 2021 to 22 APR 2021

AK, 25 FEB 2021 to 22 APR 2021