

SHEMYA I., ALEUTIAN I., ALASKA

VOR/DME or TACAN RWY 10

VORTAC SYA 109.0 Chan 27	APCH CRS 092°	Rwy ldg 10,004 TDZE 98 Arprt Elev 98
--	-------------------------	---

AL-1246 [USAF]

EARECKSON AS (PASY)

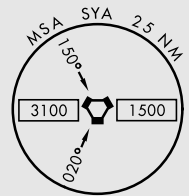
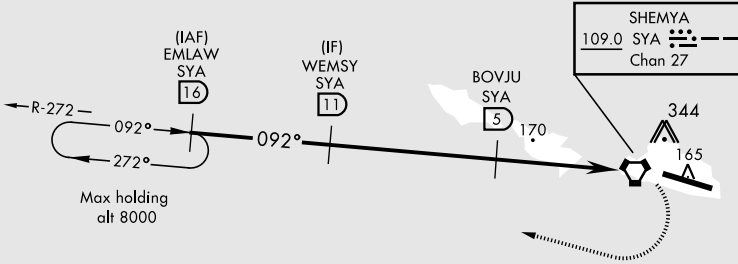
* When ALS inop, increase vis to 1½ miles.
** Circling Not Authorized in area N of Rwy 10-28.



MISSED APPROACH: Climb to 1200, then climbing right turn to 4000, intercept SYA R-272 direct EMLAW and hold.

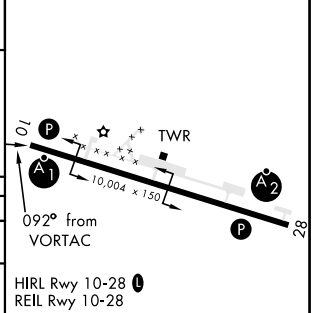
ANCHORAGE CENTER 119.1 339.8	CTAF 127.2 352.05 0	ASOS 135.65
--	-------------------------------	-----------------------

CAUTION: Numerous obstructions in area N of Rwy 10-28.
Missed approach requires use of RNAV or ATC RADAR monitoring.



EMERG SAFE ALT 100 NM 5200

EMLAW 16	WEMSY 11	BOVJU 5	ELVEK 0.1	VORTAC	ELEV 98	TDZE 98
4000	2500	1800	1200	4000		
2.56° TCH 42						
4.9 NM		1.2 NM				
CATEGORY	A	B	C	D	E	
S-10 *	460-1 362 (400-1)					
CIRCLING **	460-1½ 363 (400-1½)	560-1½ 463 (500-1½)	660-2 563 (600-2)			



SHEMYA I., ALEUTIAN I., ALASKA
Amdt 5 10OCT19

52°43'N-174°07'E

EARECKSON AS (PASY)

VOR/DME or TACAN RWY 10

AK, 25 FEB 2021 to 22 APR 2021

AK, 25 FEB 2021 to 22 APR 2021