

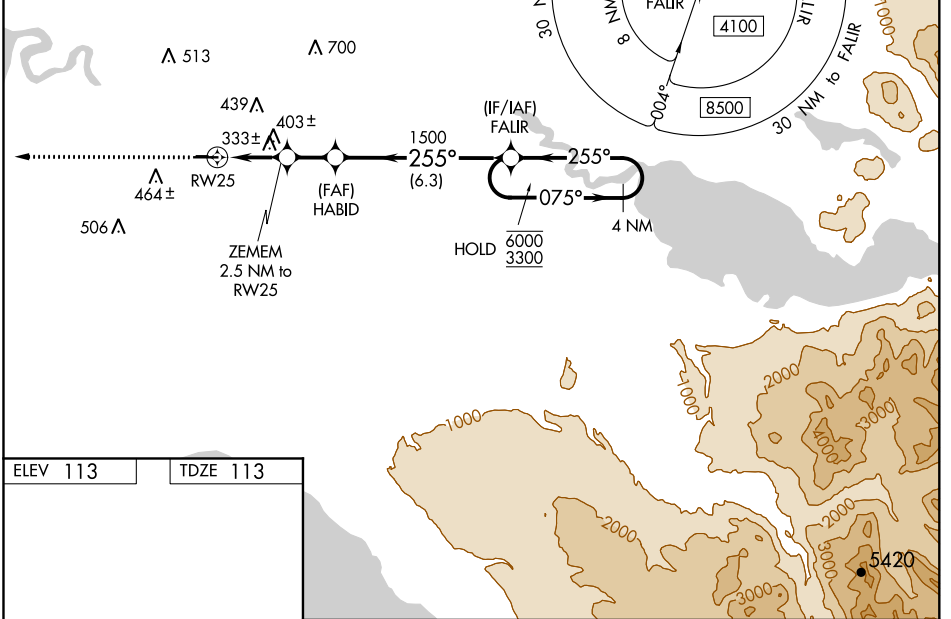
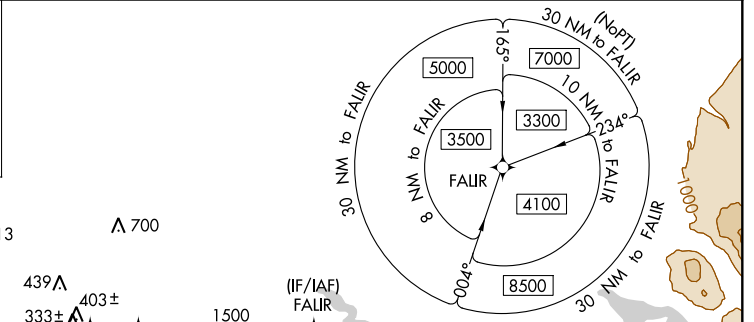
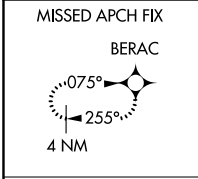
WAAS CH 86236 W25A	APP CRS 255°	Rwy Idg TDZE 113 Apt Elev 113	5001
--	------------------------	---	-------------

RNAV (GPS) RWY 25

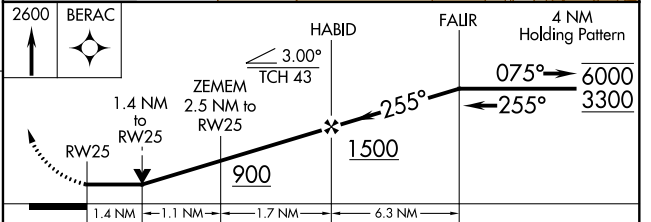
SOLDOTNA (SXQ)(PASX)

RNP APCH.	<p>⚠ Circling NA to Rws 7S and 25S. Circling Rwy 7 NA at night. Rwy 25 helicopter visibility reduction below 3/4 SM NA.</p>	<p>MISSED APPROACH: Climb to 2600 direct BERAC and hold.</p>

AWOS-3P 135.45	ANCHORAGE CENTER 125.7 379.1	CTAF 122.5
--------------------------	--	----------------------



ELEV 113	TDZE 113
----------	----------



CATEGORY	A	B	C	D
LP MDA	600-1	487 (500-1)	600-1 ³ / ₈	487 (500-1 ³ / ₈)
LNAV MDA	660-1	547 (600-1)	660-1 ⁵ / ₈	547 (600-1 ⁵ / ₈)
<input checked="" type="checkbox"/> CIRCLING	740-1 627 (700-1)	780-1 667 (700-1)	820-2 707 (800-2)	980-2 ³ / ₄ 867 (900-2 ³ / ₄)

MIRL Rwy 7-25

AK, 25 FEB 2021 to 22 APR 2021

AK, 25 FEB 2021 to 22 APR 2021