

WAAS CH 63041 W 14A	APP CRS 121°	Rwy Idg TDZE Apt Elev	4099 23 24
---	------------------------	-----------------------------	---------------------------------------

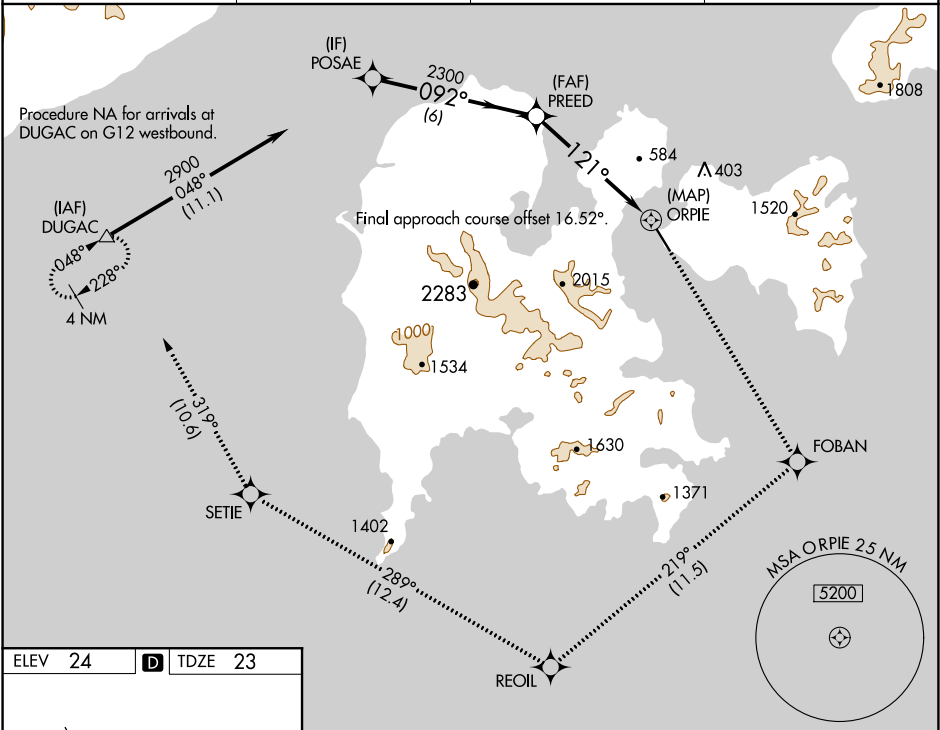
RNAV (GPS) RWY 14

SAND POINT (SDP) (PASD)

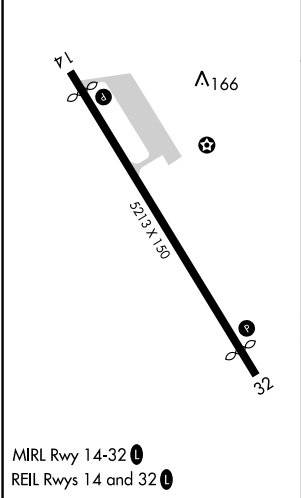
⚠ Circling NA northeast of Rwy 14-32.
DME/DME RNP-0.3 NA.

MISSED APPROACH: Climb to 5000 direct FOBAN and on track 219° to REOIL and on track 289° to SETIE and on track 319° to DUGAC and hold.

AWOS-3P 134.85	ANCHORAGE CENTER 125.35 346.3	CLNC DEL 122.3 (CTAF) 0	UNICOM 122.8
--------------------------	---	-----------------------------------	------------------------



ELEV 24	D	TDZE 23
---------	----------	---------



MIRL Rwy 14-32 **0**
REIL Rws 14 and 32 **0**

POSABE	5000	FOBAN	tr 219°	REOIL	tr 289°	SETIE	tr 319°	DUGAC
2900	↑	PREED	↖	↘	↘	↘	△	
3.49° TCH 60		VGSi and descent angles not coincident (VGSi Angle 3.60/TCH 31).						
092°		2300		121°		1.7 NM to ORPIE		
6 NM		3.8 NM		1.7 NM		0.5		
CATEGORY	A	B	C	D				
LP MDA	720-1	697 (700-1)	720-2	697 (700-2)				
LNAV MDA	860-1 837 (900-1)	860-1¼ 837 (900-1¼)	860-2½	837 (900-2½)				
C CIRCLING	860-1¼	836 (900-1¼)	1520-3 1496 (1500-3)	2200-3 2176 (2200-3)				