

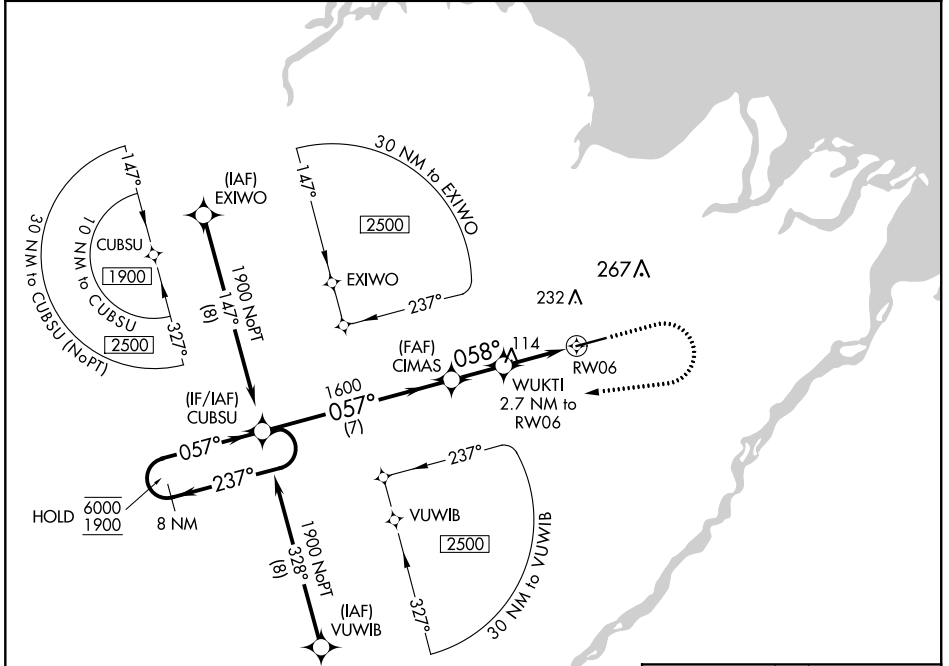
WAAS CH <b>49103</b> <b>W06A</b>	APP CRS <b>058°</b>	Rwy Idg TDZE Apt Elev	<b>6500</b> <b>67</b> <b>67</b>
----------------------------------------	------------------------	-----------------------------	---------------------------------------

# RNAV (GPS) Z RWY 6

DEADHORSE (SCC) (PASC)

RNP APCH.	MALSRL	MISSED APPROACH: Climb to 500 then climbing right turn to 1900 direct CUBSU and hold.
<p>▼ For uncompensated Baro-VNAV systems, LNAV/VNAV NA below -17°C or above 54°C. For inop ALS, increase LPV Cat E visibility to RVR 4000, and increase LNAV/VNAV all Cats and LNAV Cats C/D/E visibility to RVR 4500. # RVR 1800 authorized with use of FD or AP or HUD to DA.</p> <p>⚠ -45°C</p>		

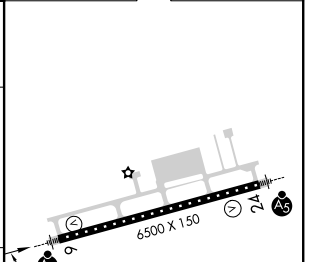
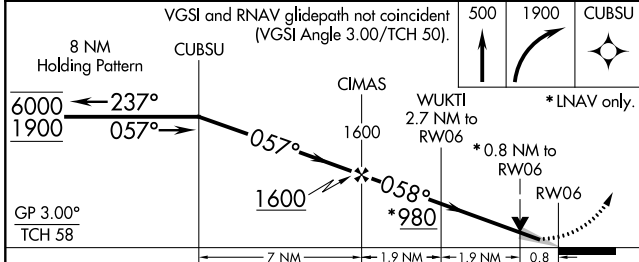
AFIS <b>118.4</b>	ANCHORAGE CENTER <b>134.4 370.9</b>	DEADHORSE RADIO <b>123.6 (CTAF)</b>
----------------------	----------------------------------------	----------------------------------------



AK, 25 FEB 2021 to 22 APR 2021

AK, 25 FEB 2021 to 22 APR 2021

ELEV 67	<b>D</b> TDZE 67
---------	------------------



CATEGORY	A	B	C	D	E
LPV DA#		267/24	200 (200-1/2)		
LNAV/VNAV DA		369/24	302 (400-1/2)		
LNAV MDA		380/24	313 (400-1/2)		
<b>C</b> CIRCLING	540-1	473 (500-1)	580-1 1/2 513 (600-1 1/2)	620-2	553 (600-2)

HIRL Rwy 6-24	<b>D</b>
---------------	----------