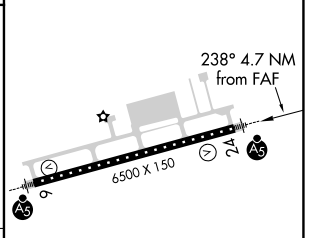
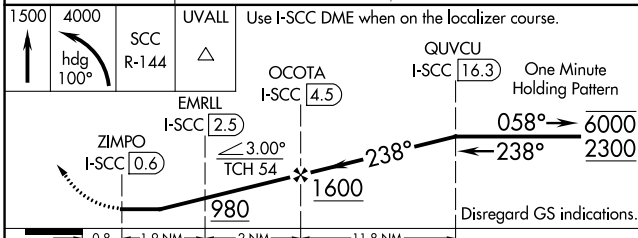
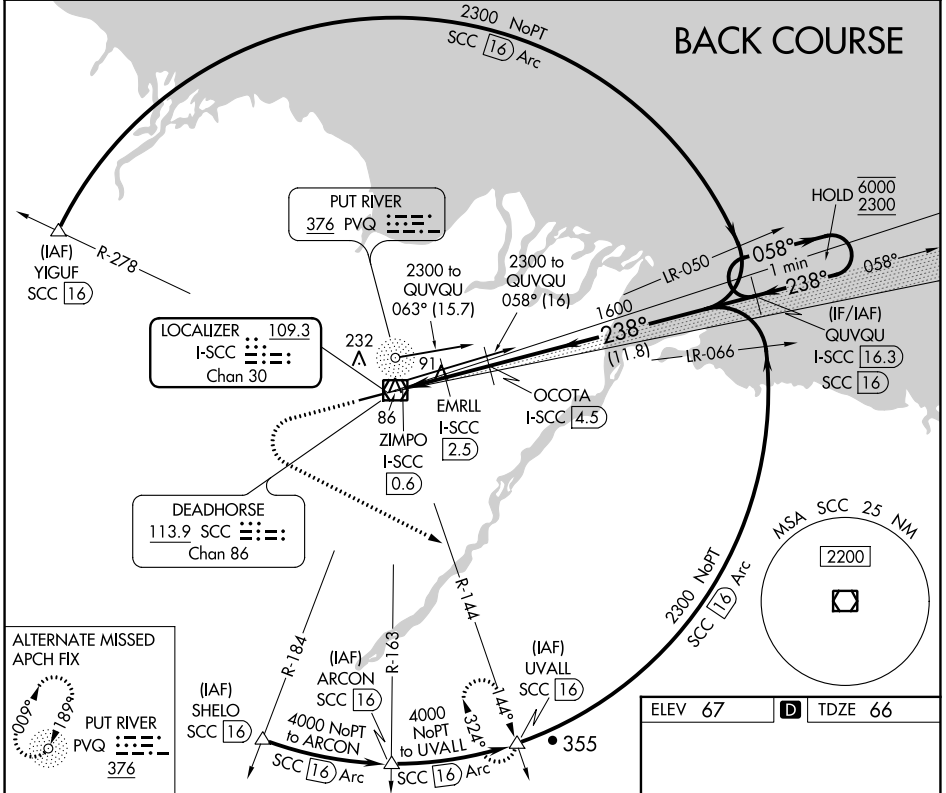


LOC/DME I-SCC 109.3 Chan 30	APP CRS 238°	Rwy Idg TDZE Apt Elev	6500 66 67
--	------------------------	-----------------------------	---------------------------------------

LOC BC RWY 24
DEADHORSE (SCC) (PASC)

DME required. ▲ ▲ For inop ALS, increase S-24 Cat E visibility to RVR 5000. ☁ -45°C	MALSR ▲	MISSED APPROACH: Climb to 1500 then climbing left turn to 4000 on heading 100° and SCC VOR/DME R-144 to UVALL/SCC VOR/DME 16 DME and hold.
--	------------	--

AFIS 118.4	ANCHORAGE CENTER 134.4 370.9	DEADHORSE RADIO 123.6 (CTAF) 0
----------------------	--	--



CATEGORY	A	B	C	D	E
S-24	340/24 274 (300-1/2)				
CIRCLING	540-1 473 (500-1)	580-1 1/2 513 (600-1 1/2)	620-2 553 (600-2)		

ELEV 67	TDZE 66
HIRL Rwy 6-24 0	

AK, 25 FEB 2021 to 22 APR 2021

AK, 25 FEB 2021 to 22 APR 2021