

WAAS CH 99425 W23A	APP CRS 229°	Rwy Idg 4589 TDZE 45 Apt Elev 45
--	------------------------	---

RNAV (GPS) RWY 23

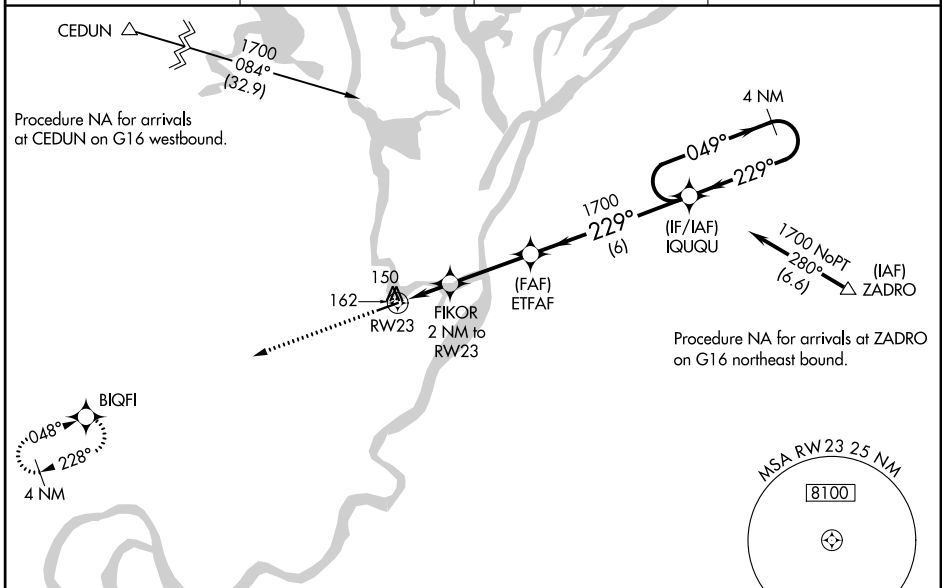
NUIQSUT (AQT) (PAQT)

⚠ For uncompensated Baro-VNAV systems, LNAV/VNAV NA below -25°C (-13°F) or above 54°C (130°F). DME/DME RNP-0.3 NA. Baro-VNAV NA with Deadhorse altimeter setting. When local altimeter setting not received, use Deadhorse altimeter setting and increase all DA 123 feet and all MDA 140 feet, increase LPV all Cats and LNAV Circling Cat C visibility ¼ mile, increase LNAV/VNAV all Cats and LNAV Cat C visibility ½ mile.

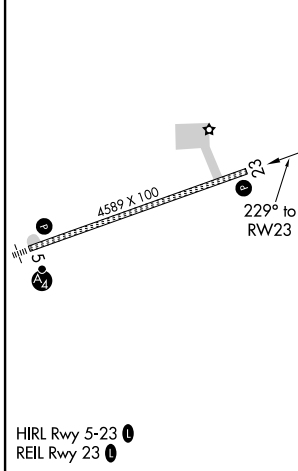
❄ -41°C

MISSED APPROACH: Climb to 1700 direct BIQFI and hold.

ASOS 135.35	ANCHORAGE CENTER 119.4	DEADHORSE RADIO 122.5	CTAF 122.8
-----------------------	----------------------------------	---------------------------------	----------------------



ELEV 45	TDZE 45
---------	---------



CATEGORY	A	B	C	D
LPV DA	295-1	250 (300-1)		NA
LNAV/VNAV DA	369-1	324 (400-1)		NA
LNAV MDA	480-1	435 (500-1)	480-1½ 435 (500-1½)	NA
CIRCLING	520-1	475 (500-1)	520-1½ 475 (500-1½)	NA

AK, 25 FEB 2021 to 22 APR 2021

AK, 25 FEB 2021 to 22 APR 2021