

APP CRS <b>253°</b>	Rwy Idg <b>3280</b>
	TDZE <b>57</b>
	Apt Elev <b>57</b>

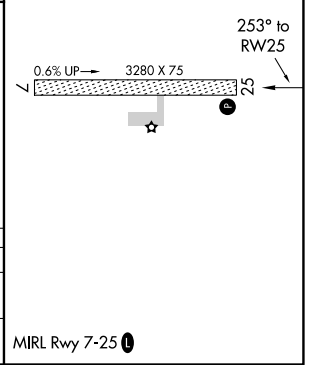
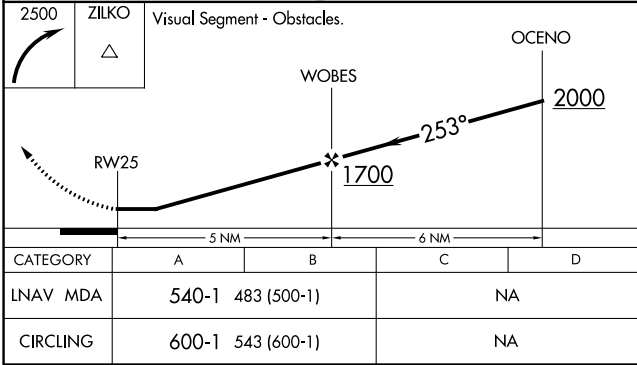
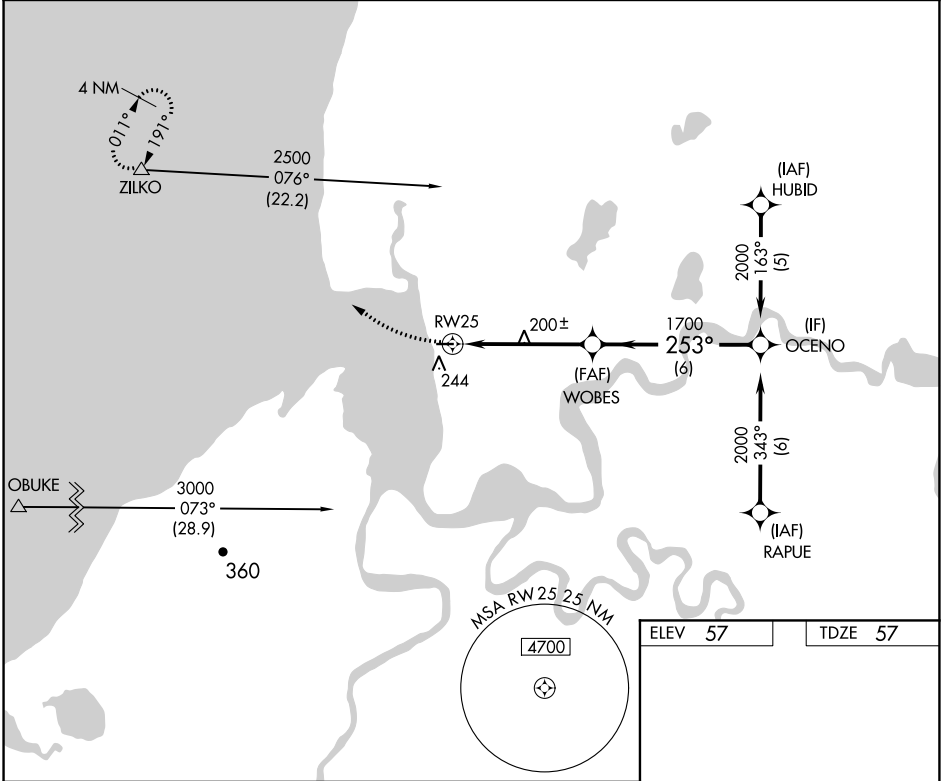
# RNAV (GPS) RWY 25

PILOT POINT (PNP)(PAPN)

**⚠** DME/DME RNP-0.3 NA. When local altimeter setting not received, use King Salmon altimeter setting and increase all MDA 180 feet.

MISSED APPROACH: Climbing right turn to 2500 direct ZILKO and hold.

AWOS-3P <b>118.375</b>	ANCHORAGE CENTER <b>132.9 288.3</b>	CTAF <b>122.9 0</b>
---------------------------	--	------------------------



AK, 25 FEB 2021 to 22 APR 2021

AK, 25 FEB 2021 to 22 APR 2021