

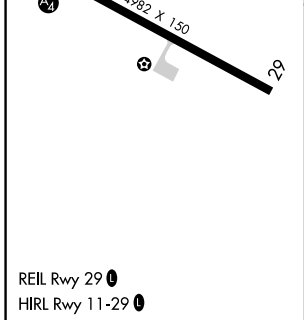
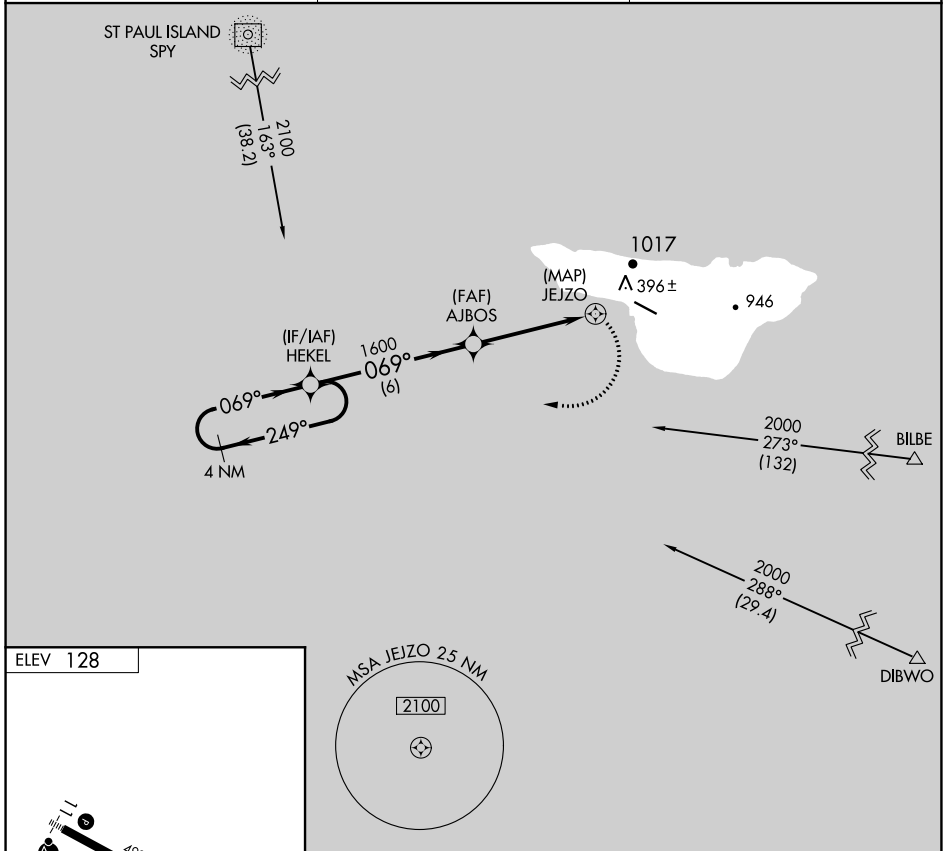
APP CRS <b>069°</b>	Rwy Idg TDZE Apt Elev	<b>N/A</b> <b>N/A</b> <b>128</b>
------------------------	-----------------------------	--

# RNAV (GPS)-D

ST GEORGE (PBV) (PAPB)

<b>⚠</b>	DME/DME RNP-0.3 NA. Circling NA north of Rwy 11-29.	MISSED APPROACH: Climbing right turn to 2100 direct HEKEL and hold.
----------	--	---

ASOS <b>135.45</b>	ANCHORAGE CENTER <b>119.1 339.8</b>	CTAF <b>122.8 0</b>
-----------------------	--	------------------------



	4 NM Holding Pattern			2100	HEKEL
	2000 ← 249° → 069°				
	HEKEL				
	AJBOS				
	1600				
	JEJZO				
	6 NM				
	4.5 NM				
CATEGORY	A	B	C	D	
<b>C</b> CIRCLING	760-1 632 (700-1)	980-1¼ 852 (900-1¼)	980-2½ 852 (900-2½)	NA	

AK, 25 FEB 2021 to 22 APR 2021

AK, 25 FEB 2021 to 22 APR 2021