

# RNAV (GPS) RWY 8

NELSON LAGOON (OUL) (PAOU)

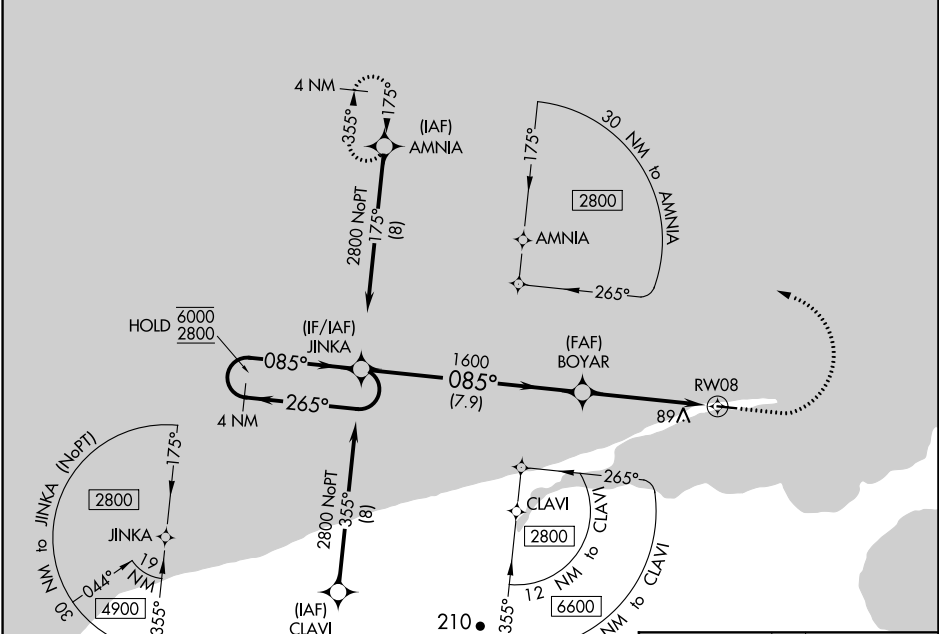
APP CRS	Rwy Idg	<b>4003</b>
<b>085°</b>	TDZE	<b>14</b>
	Apt Elev	<b>14</b>

RNP APCH.

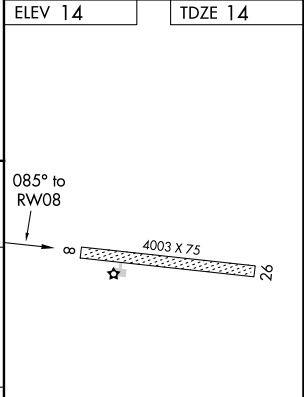
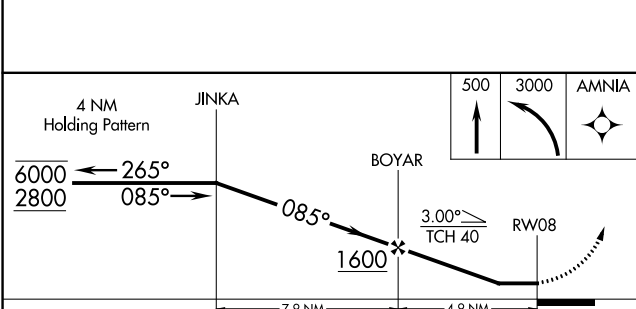
▼ Procedure NA at night.  
Rwy 8 helicopter visibility reduction below 1 SM NA.

MISSED APPROACH: Climb to 500, then climbing left turn to 3000 direct AMNIA and hold.

AWOS-3P <b>119.025</b>	ANCHORAGE CENTER <b>118.5 278.3</b>	CTAF <b>122.9 0</b>
---------------------------	--	------------------------



ELEV 14	TDZE 14
---------	---------



CATEGORY	A	B	C	D
LNVA MDA	380-1 366 (400-1)			
CIRCLING	380-1 366 (400-1)	480-1 466 (500-1)	480-1½ 466 (500-1½)	580-2 566 (600-2)

MIRL Rwy 8-26 0

AK, 25 FEB 2021 to 22 APR 2021

AK, 25 FEB 2021 to 22 APR 2021