

APP CRS	Rwy Idg	4003
265°	TDZE	10
	Apt Elev	14

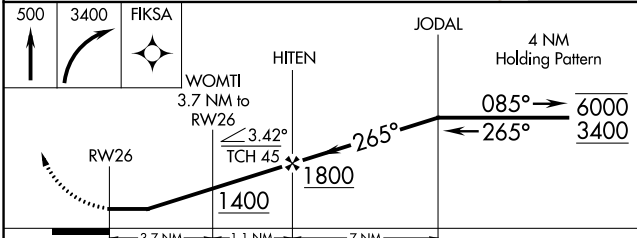
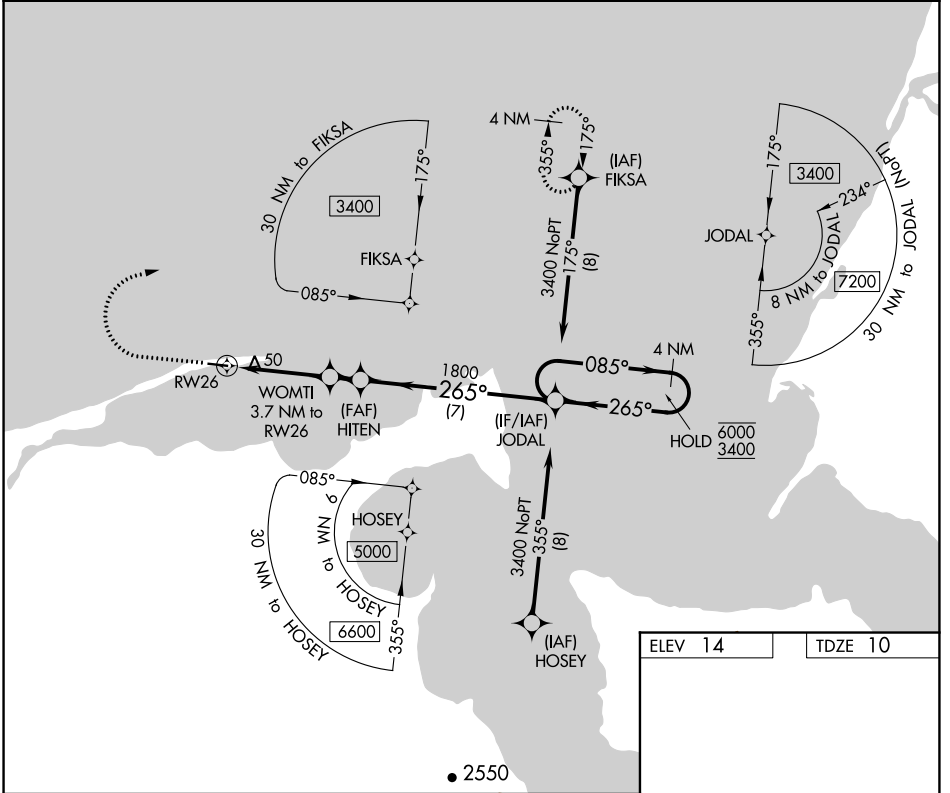
RNAV (GPS) RWY 26

NELSON LAGOON (OUL) (PAOU)

RNP APCH.
 Procedure NA at night.
 Rwy 26 helicopter visibility reduction below 1 SM NA.

MISSED APPROACH: Climb to 500, then climbing right turn to 3400 direct FIKSA and hold. Continue climb in hold to 3400.

AWOS-3P 119.025	ANCHORAGE CENTER 118.5 278.3	CTAF 122.90
----------------------------------	---	------------------------------



ELEV 14	TDZE 10
---------	---------

CATEGORY	A	B	C	D
LNVA MDA	300-1 290 (300-1)			
CIRCLING	520-1	506 (600-1)	520-1½ 506 (600-1½)	580-2 566 (600-2)

MRL Rwy 8-26

AK, 25 FEB 2021 to 22 APR 2021

AK, 25 FEB 2021 to 22 APR 2021