

APP CRS <b>317°</b>	Rwy Idg TDZE Apt Elev	<b>3281</b> <b>354</b> <b>364</b>
------------------------	-----------------------------	---

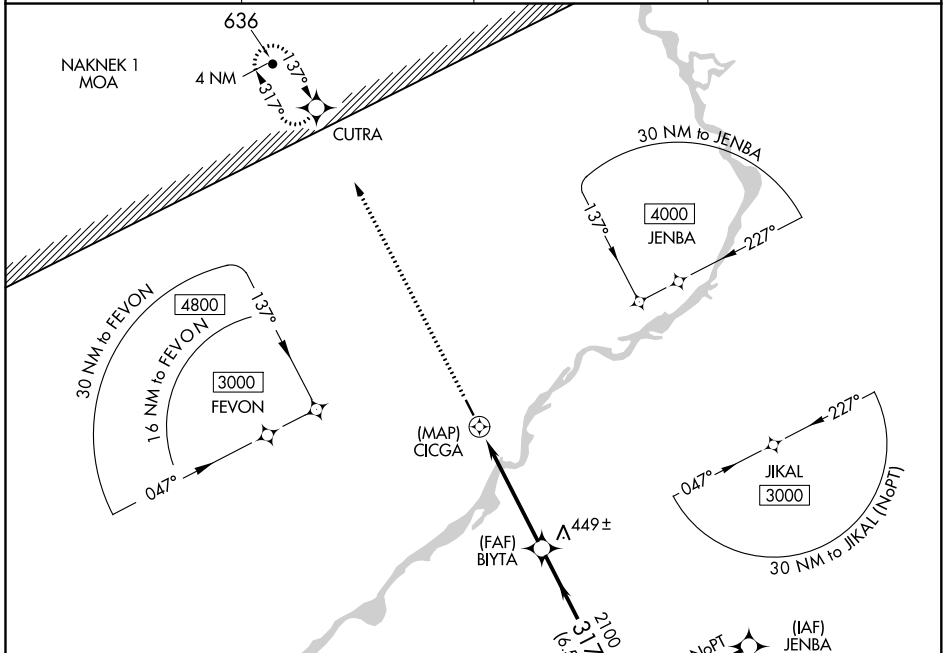
# RNAV (GPS) RWY 32

NEW STUYAHOK (KNW) (P.ANW)

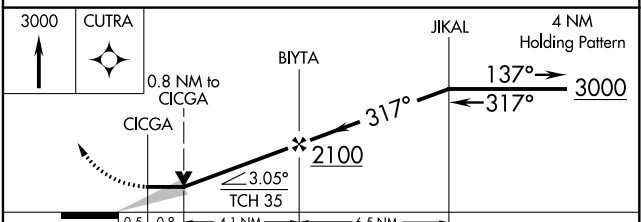
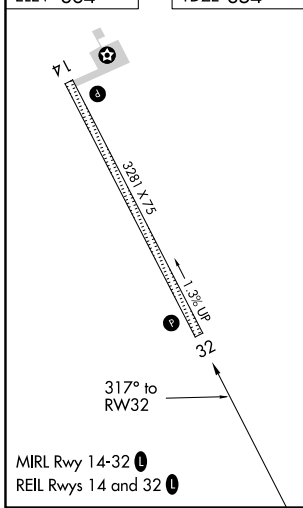
**▼** When local altimeter setting not received, use Koliganek altimeter setting and increase all MDAs 60 feet.  
**▲** Procedure NA at night. DME/DME RNP-0.3 NA.

MISSED APPROACH: Climb to 3000 direct CUTRA and hold.

AWOS-3P <b>120.275</b>	ANCHORAGE CENTER <b>132.75 282.35</b>	DILLINGHAM RADIO <b>122.55</b>	CTAF <b>122.9</b>
---------------------------	--	-----------------------------------	----------------------



ELEV 364	TDZE 354
----------	----------



CATEGORY	A	B	C	D
LNAV MDA	760-1	406 (400-1)	NA	
CIRCLING	780-1 416 (500-1)	840-1 476 (500-1)	NA	

AK, 25 FEB 2021 to 22 APR 2021

AK, 25 FEB 2021 to 22 APR 2021