

APP CRS	Rwy Idg	4000
171°	TDZE	288
	Apt Elev	309

RNAV (GPS) RWY 17

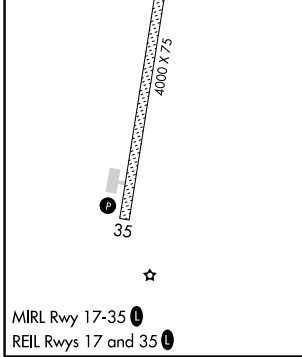
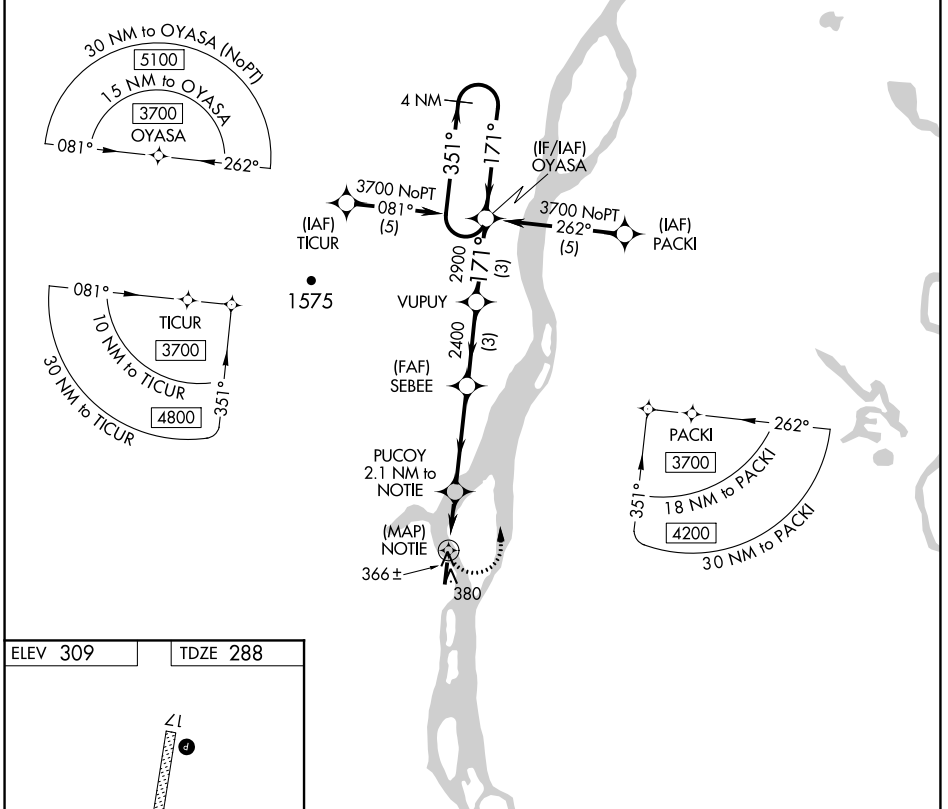
ANVIK (ANV)(PANV)

⚠ DME/DME RNP-0.3 NA. When local altimeter setting not received, use Holy Cross altimeter setting and increase all MDAs 120 feet and LNAV visibility Cat C ½ mile, Cat D ½ mile.

⚠ -32°C

MISSED APPROACH: Climbing left turn to 3700 direct OYASA and hold, continue climb-in-hold to 3700.

AWOS-3P 133.55	ANCHORAGE CENTER 135.7 335.5	KENAI RADIO 122.4	UNICOM 122.7 (CTAF) 0
--------------------------	--	-----------------------------	---------------------------------



3700 OYASA	VGSi and descent angles not coincident (VGSi Angle 3.00/TCH 25).			
	PUCOY 2.1 NM to NOTIE	SEBEE	VUPLY	OYASA 4 NM Holding Pattern
	1140	2400	2900	3700
	0.5	2.1 NM	3.8 NM	3 NM
CATEGORY	A	B	C	D
LNAV MDA	700-1	412 (400-1)	700-1½	412 (400-1½)
CIRCLING	840-1	543 (600-1)	840-1½	860-2
			543 (600-1½)	563 (600-2)

AK, 25 FEB 2021 to 22 APR 2021

AK, 25 FEB 2021 to 22 APR 2021