

VORTAC AKN 112.8 Chan 75	APP CRS 296°	Rwy Idg TDZE Apt Elev 8501 73 73
---------------------------------------	------------------------	--

VOR Y or TACAN Y RWY 30

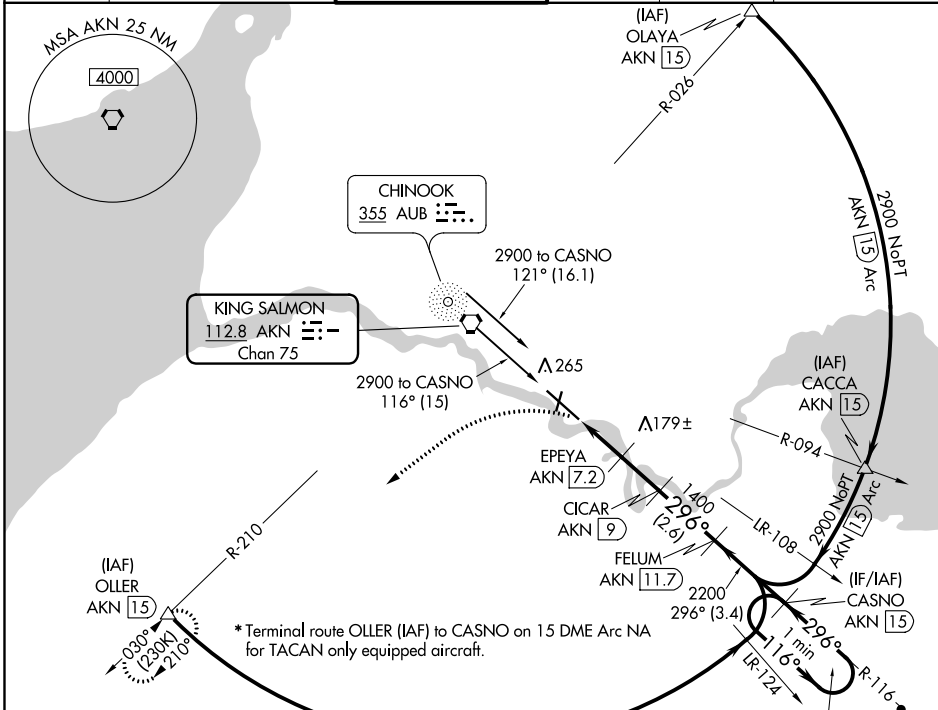
KING SALMON (AKN)(PAKN)

DME required.

 -31°C

MISSED APPROACH: Climbing left turn to 3000 on heading 222° and on AKN VORTAC R-210 to OLLER/15 DME and hold.

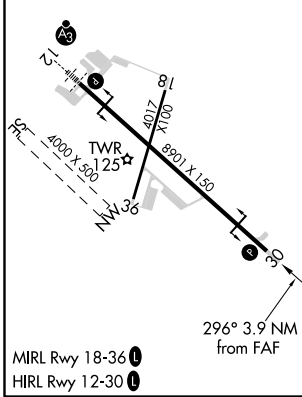
ATIS 128.8	ANCHORAGE CENTER 124.8 354.0	KING SALMON TOWER* 118.3 279.5	GND CON 121.9	UNICOM 122.95	CTAF 121.9 352.05
----------------------	--	--	-------------------------	-------------------------	-----------------------------



AK, 25 FEB 2021 to 22 APR 2021

AK, 25 FEB 2021 to 22 APR 2021

ELEV 73	D	TDZE 73
---------	----------	---------



3000	AKN R-210	OLLER			
hdg 222°					
AKN 5.1	AKN 6.3	EPEYA AKN 7.2	CICAR AKN 9	FELUM AKN 11.7	CASNO AKN 15
800	1400	2200	296°	116°	6000
1.1 NM	0.9	1.8 NM	2.6 NM	3.4 NM	
≤ 3.10° TCH 45					
One Minute Holding Pattern					
					116° → 6000
					← 296° 2900
296° 3.9 NM from FAF					
CATEGORY	A	B	C	D	E
S-30	480-1	407 (500-1)	480-1½	407 (500-1½)	
C CIRCLING	580-1	507 (600-1)	580-1½	900-2¾	960-3
			507 (600-1½)	827 (900-2¾)	887 (900-3)