

VORTAC AKN 112.8 Chan 75	APP CRS 116°	Rwy Idg TDZE Apt Elev 8501 62 73
--	------------------------	--

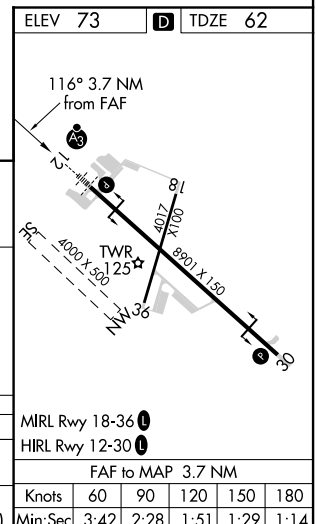
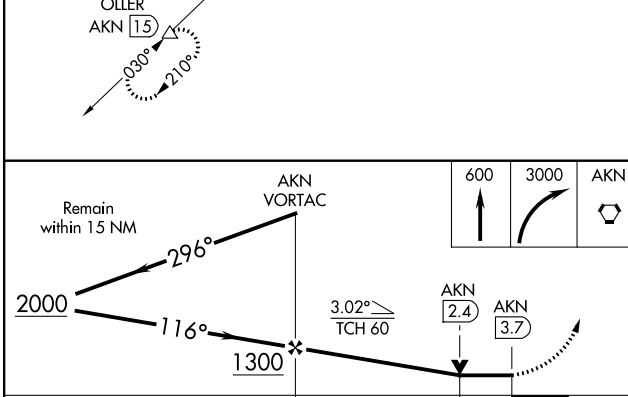
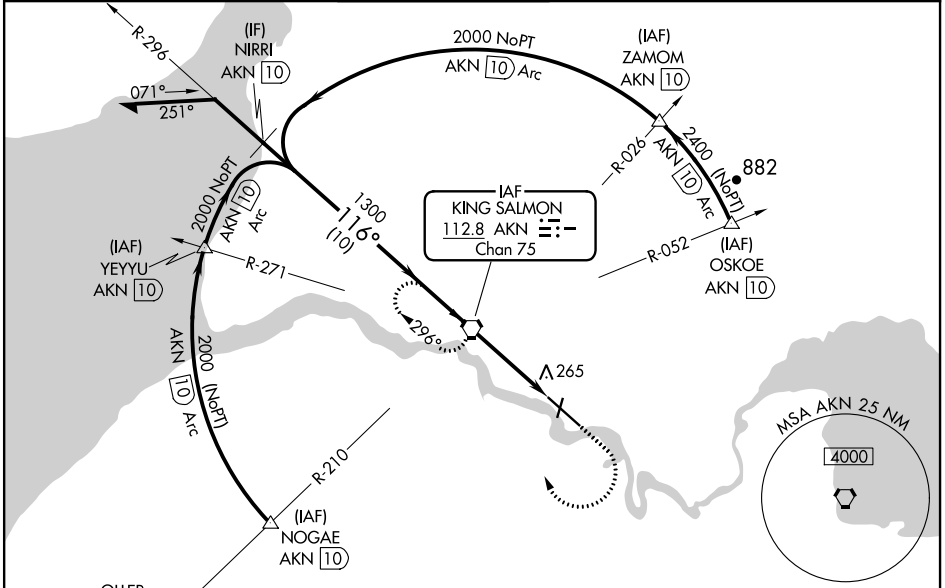
VOR Y or TACAN Y RWY 12

KING SALMON (AKN)(PAKN)

For inop ALS, increase S-12 Cat E visibility to 1 3/8 SM. When control tower closed, increase S-12 all Cats visibility to RVR 5000. When control tower closed, inop table doesn't apply to Cats A/B. When control tower closed and ALS inop, increase S-12 Cats C/D/E visibility to 1 3/8 SM.

SSALR
MISSED APPROACH: Climb to 600 then climbing right turn to 3000 direct AKN VORTAC and hold, continue climb-in-hold to 3000. (TACAN AIRCRAFT: Climbing right turn to 3000 on heading 238° and on AKN VORTAC R-210 to OLLER/ 15 DME and hold SW, right turn, 030° inbound.)

ATIS 128.8	ANCHORAGE CENTER 124.8 354.0	KING SALMON TOWER* 118.3 279.5	GND CON 121.9	UNICOM 122.95	CTAF 121.9 352.05
----------------------	--	--	-------------------------	-------------------------	-----------------------------



CATEGORY	A	B	C	D	E
S-12	520/24	458 (500-1/2)	520/45	458 (500-3/4)	
CIRCLING	580-1	507 (600-1)	580-1 1/2 507 (600-1 1/2)	900-2 3/4 827 (900-2 3/4)	960-3 887 (900-3)

MRL Rwy 18-36	60	90	120	150	180
HIRL Rwy 12-30	3:42	2:28	1:51	1:29	1:14

FAF to MAP 3.7 NM

AK, 25 FEB 2021 to 22 APR 2021

AK, 25 FEB 2021 to 22 APR 2021