

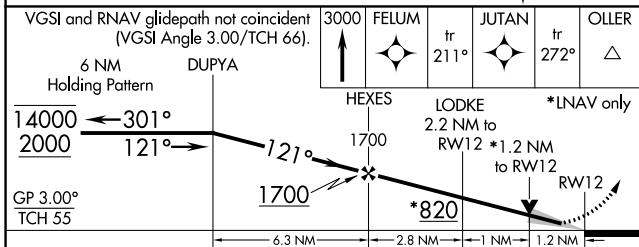
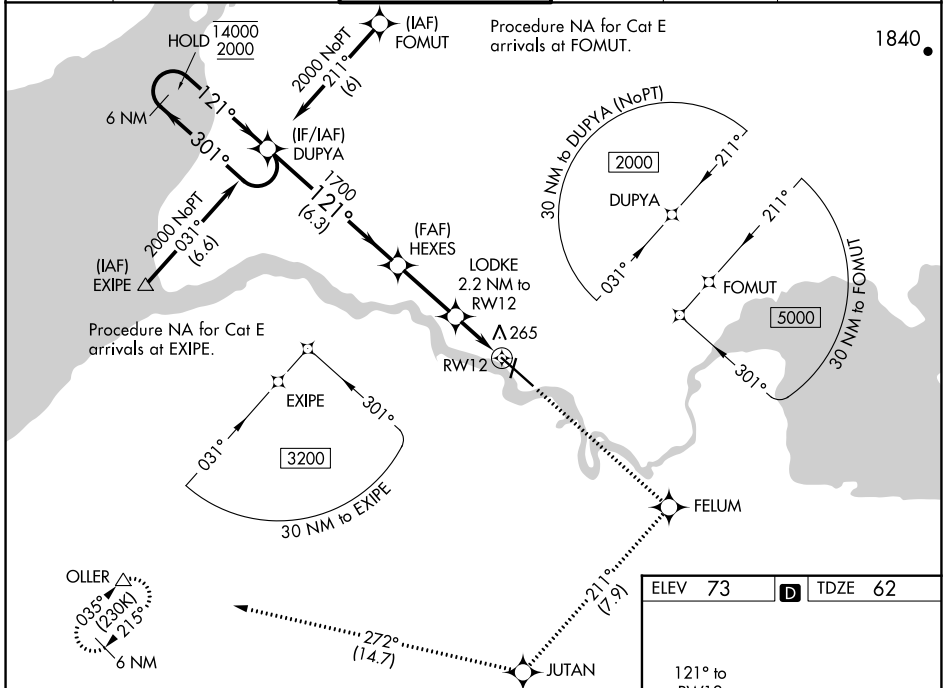
WAAS CH 72608 W12A	APP CRS 121°	Rwy Idg TDZE 62 Apt Elev 73
--	------------------------	---

RNAV (GPS) RWY 12

KING SALMON (AKN)(PAKN)

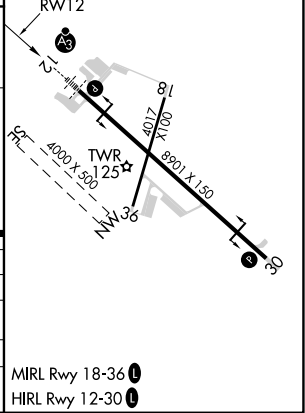
RNP APCH.	<p>For uncompensated Baro-VNAV systems, procedure NA below -18°C or above 54°C. For inop ALS, increase LPV Cat E visibility to RVR 4000, increase LNAV/VNAV all Cats visibility to RVR 5000 and increase LNAV Cat E visibility to 1½ SM. When control tower closed, LPV, LNAV/VNAV and LNAV visibility RVR 5000. When control tower closed, inop table does not apply to LPV, LNAV/VNAV and LNAV Cats A/B. # RVR 1800 authorized with use of FD or HUD to DA (NA when control tower closed).</p>	SSALR	<p>MISSED APPROACH: Climb to 3000 direct FELUM and on track 211° to JUTAN and on track 272° to OLLER and hold.</p>
-----------	--	-------	--

ATIS 128.8	ANCHORAGE CENTER 124.8 354.0	KING SALMON TOWER* 118.3 279.5	GND CON 121.9	UNICOM 122.95	CTAF 121.9 352.05
----------------------	--	--	-------------------------	-------------------------	-----------------------------



ELEV 73	TDZE 62
---------	---------

CATEGORY	A	B	C	D	E
LPV DA	262/24 200 (200-½)				
LNAV/VNAV DA	426/35 364 (400-¾)				
LNAV MDA	520/24 458 (500-½)		520/45 458 (500-¾)		
CIRCLING	580-1 507 (600-1)		580-1½ 900-2¾ 507 (600-1½) 827 (900-2¾)		960-3 887 (900-3)



AK, 25 FEB 2021 to 22 APR 2021

AK, 25 FEB 2021 to 22 APR 2021