

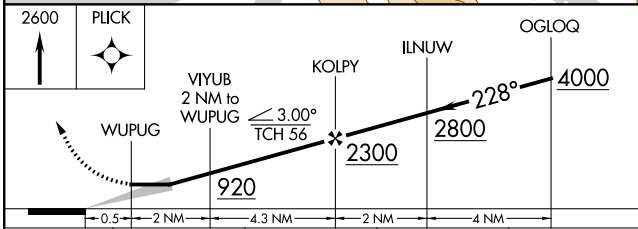
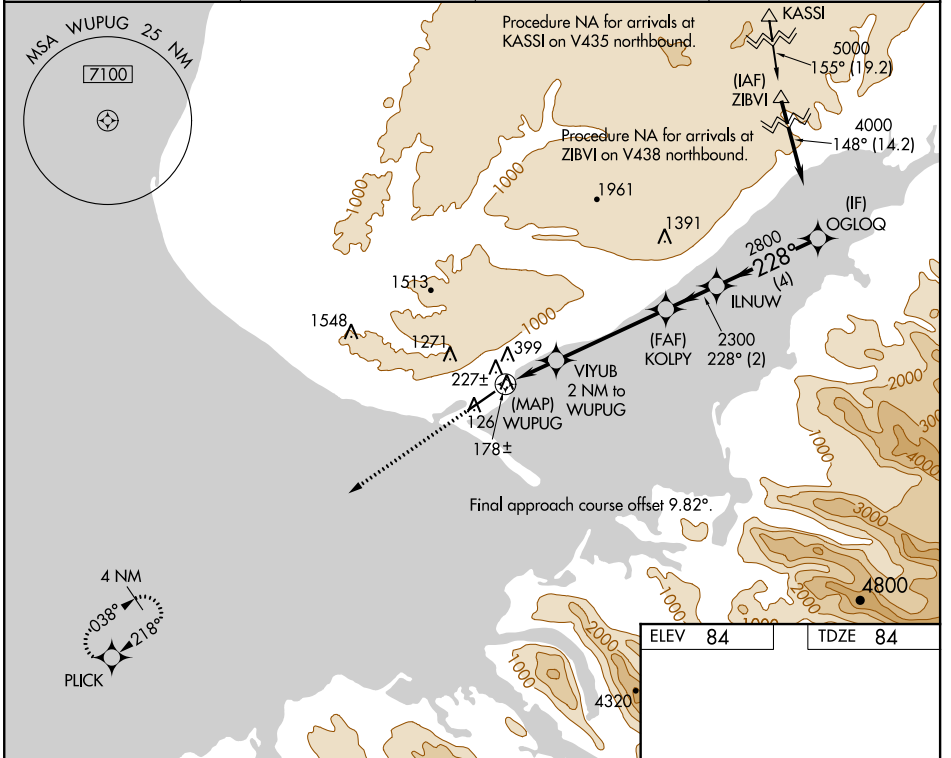
WAAS CH <b>72633</b> <b>W22B</b>	APP CRS <b>228°</b>	Rwy Idg TDZE Apt Elev	<b>6701</b> <b>84</b> <b>84</b>
--	------------------------	-----------------------------	---------------------------------------

# RNAV (GPS) Y RWY 22

HOMER (HOM) (PAHO)

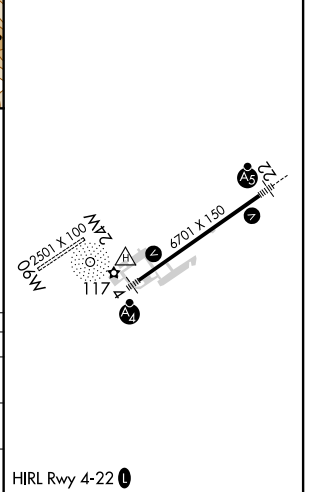
RNP APCH.	MALSR 	MISSED APPROACH: Climb to 2600 direct PLICK and hold.
<p><b>⚠</b> Inop table does not apply to LP and LNAV Cat A/B. Circling NA northwest of Rwy 4-22. Circling NA to waterways 6W and 24W. For inop ALS, increase LP Cat C/D visibility to 1/8 SM and LNAV Cat C/D to 1/8 SM.</p>		

AFIS <b>135.65</b>	ANCHORAGE CENTER <b>125.9 270.3</b>	HOMER RADIO <b>123.6 (CTAF) 0</b>	UNICOM <b>122.7 123.0 123.05</b>
-----------------------	--	--------------------------------------	-------------------------------------



CATEGORY	A	B	C	D
LP MDA	500-1 416 (500-1)			
LNAV MDA	760-1 676 (700-1)	760-1½ 676 (700-1½)		
<b>C</b> CIRCLING	760-1 676 (700-1)	760-2 676 (700-2)	760-2¼ 676 (700-2¼)	

ELEV 84	TDZE 84
---------	---------



AK, 25 FEB 2021 to 22 APR 2021

AK, 25 FEB 2021 to 22 APR 2021