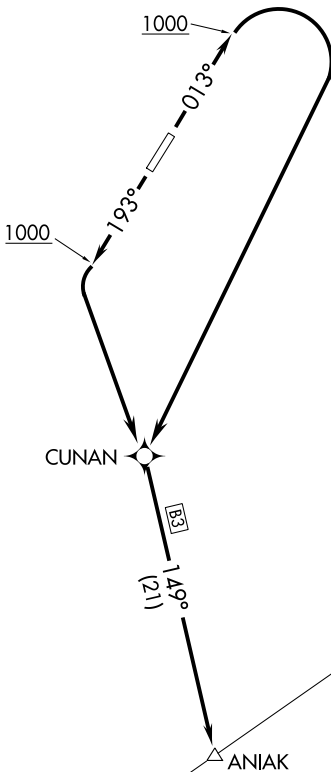


**TOP ALTITUDE:
ASSIGNED BY ATC**

ANCHORAGE CENTER
118.15 251.05
ASOS
118.325
CTAF
122.8



AK, 25 FEB 2021 to 22 APR 2021

AK, 25 FEB 2021 to 22 APR 2021

V480 (T222)

V480 (T222)

TAKEOFF MINIMUMS
Rwy 1, 19: Standard.

NOTE: RNAV 1.
NOTE: GPS required.
NOTE: Chart not to scale.



DEPARTURE ROUTE DESCRIPTION

TAKEOFF RUNWAY 1: Climb heading 013° to 1000, then right turn direct CUNAN, then via depicted route, thence. . . .

TAKEOFF RUNWAY 19: Climb heading 193° to 1000, then direct CUNAN, then via depicted route, thence. . . .

. . . .maintain 3700 or as assigned by ATC.