

NDB/DME GAM 369 Chan 92 (114.5)	APP CRS 345°	Rwy Idg 4500 TDZE 26 Apt Elev 27
---	------------------------	---

NDB/DME RWY 34

GAMBELL(GAM)(PAGM)

	Circling NA northeast of Rwy 16-34.	ODALS 	MISSED APPROACH: Climb to 3000 direct GAM NDB/DME and in GAM NDB/DME holding pattern.
	-26°C		

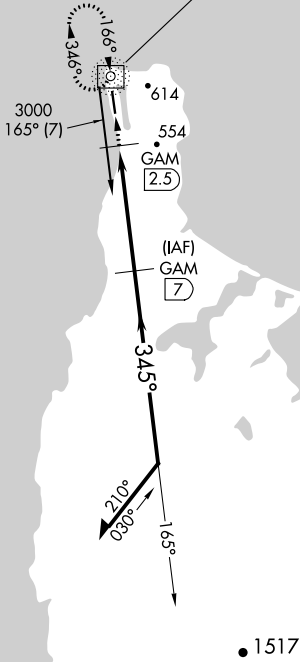
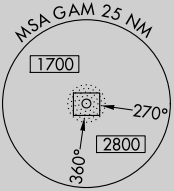
AWOS-3P 125.9	ANCHORAGE CENTER 132.2 281.4	NOME RADIO 122.0	CTAF 122.7
-------------------------	--	----------------------------	----------------------

CAUTION: GAM aural ident should be monitored to ensure against possible reception of foreign stations.

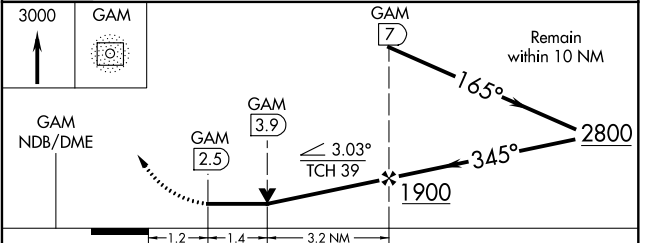
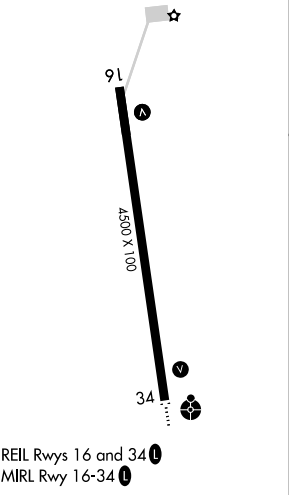
GAMBELL
369 GAM
DME Chan 92 (114.5)

3700
270°
(34.2)

KUKULIAK
117.3 ULL
Chan 120



ELEV 27	TDZE 26
---------	---------



CATEGORY	A	B	C	D
S-34	880-1½ 854 (900-1½)	880-2½ 854 (900-2½)	880-2¾ 854 (900-2¾)	880-2¾ 854 (900-2¾)
CIRCLING	880-1½ 853 (900-1½)	880-2½ 853 (900-2½)	880-2¾ 853 (900-2¾)	880-2¾ 853 (900-2¾)

AK, 25 FEB 2021 to 22 APR 2021

AK, 25 FEB 2021 to 22 APR 2021