

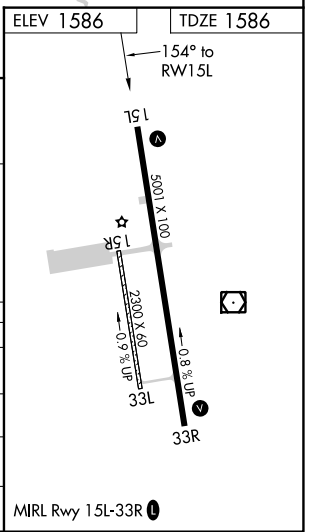
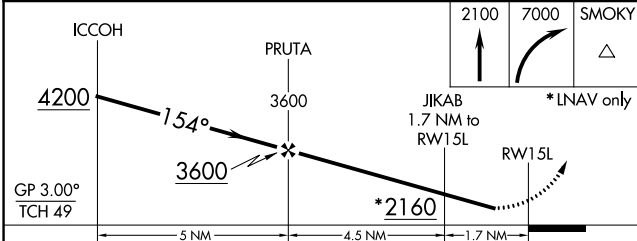
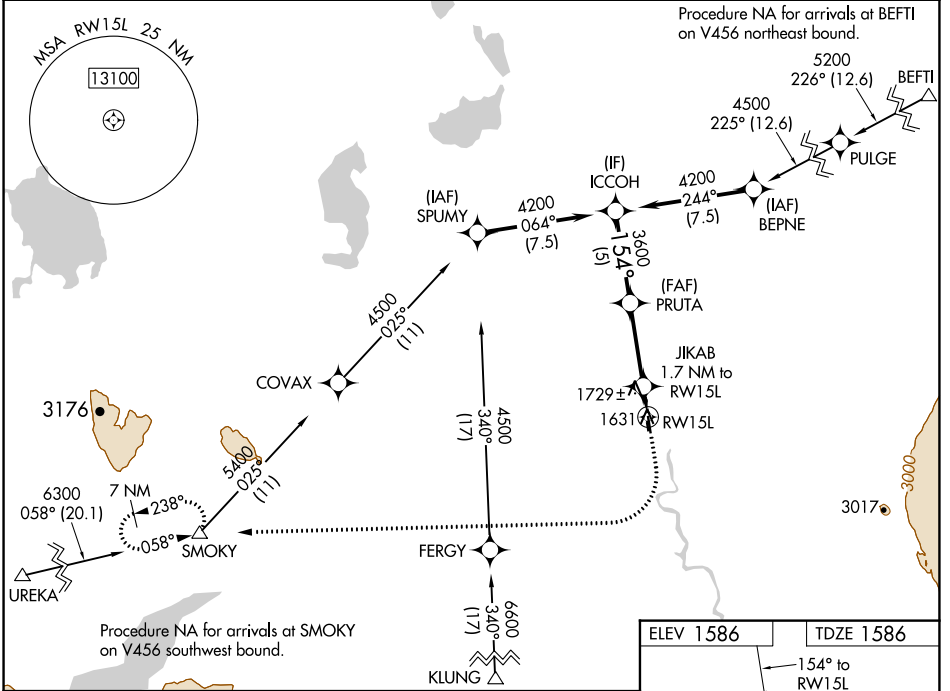
WAAS CH 82543 W15A	APP CRS 154°	Rwy Idg TDZE Apt Elev	5001 1586 1586
--	------------------------	-----------------------------	---

RNAV (GPS) RWY 15L

GULKANA (GKN) (PAGK)

RNP APCH.	MISSED APPROACH: Climb to 2100 then climbing right turn to 7000 direct SMOKY and hold, continue climb-in-hold to 7000.
<p>⚠ Circling Rwy 15R, 33L NA at night. Rwy 15L helicopter visibility reduction below ¾ SM NA. For uncompensated Baro-VNAV systems, LNAV/VNAV NA below -21°C or above 54°C.</p> <p>❄ -37°C</p>	

ASOS 134.85	ANCHORAGE CENTER 119.5 317.5	CTAF 122.9
-----------------------	--	----------------------



CATEGORY	A	B	C	D
LNAV/DA		1836-1	250 (300-1)	
LPV DA		1877-1	291 (300-1)	
LNAV MDA	2040-1	454 (500-1)	2040-1 3/8	454 (500-1 3/8)
C CIRCLING	2040-1 454 (500-1)	2080-1 494 (500-1)	2080-1 1/2 494 (500-1 1/2)	2200-2 614 (700-2)

AK, 25 FEB 2021 to 22 APR 2021

AK, 25 FEB 2021 to 22 APR 2021