

APP CRS 020°	11050
TDZE 439	
Apt Elev 439	

RNAV (RNP) Z RWY 2L

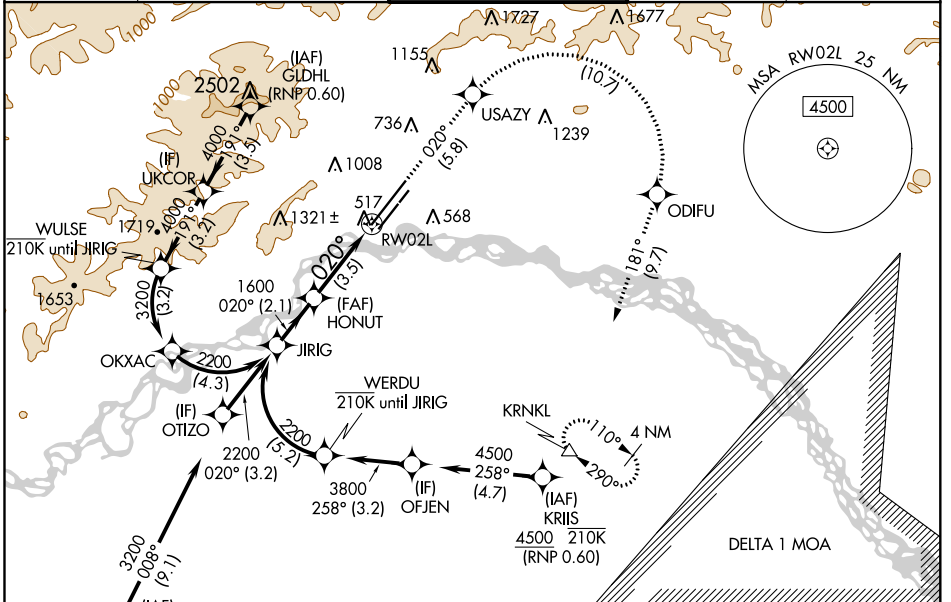
FAIRBANKS INTL (FAI) (PAFA)

▽ For uncompensated Baro-VNAV systems, procedure NA below -18°C (0°F) or above 54°C (130°F). RF and GPS required. For inop ALS, increase RNP 0.15 all Cats visibility to RVR 6000.

ALSF-2
A

MISSED APPROACH: Climb to 5000 on track 020° to USAZY and right turn to ODIFU and track 181° to KRNL and hold.

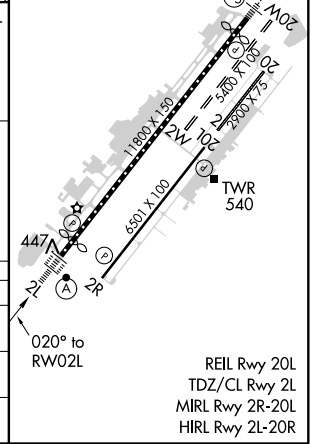
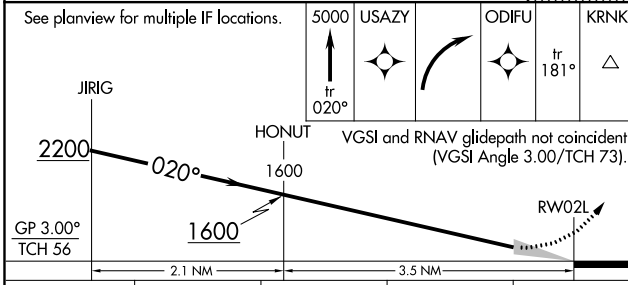
ATIS 124.4	FAIRBANKS APP CON 125.35 363.2	FAIRBANKS TOWER 118.3 257.8	GND CON 121.9	CLNC DEL 127.6
----------------------	--	---------------------------------------	-------------------------	--------------------------



AK, 25 FEB 2021 to 22 APR 2021

AK, 25 FEB 2021 to 22 APR 2021

ELEV	439	TDZE	439
------	-----	------	-----



CATEGORY	A	B	C	D
RNP 0.15 DA		798/40	359 (400-¾)	
RNP 0.30 DA		851/45	412 (500-⅞)	

AUTHORIZATION REQUIRED