

(GLEEN6.GLEEN) 19227

GALENA SIX DEPARTURE

AL-1234 (FAA)

FAIRBANKS INTL (FAI) (PAFA)

FAIRBANKS, ALASKA

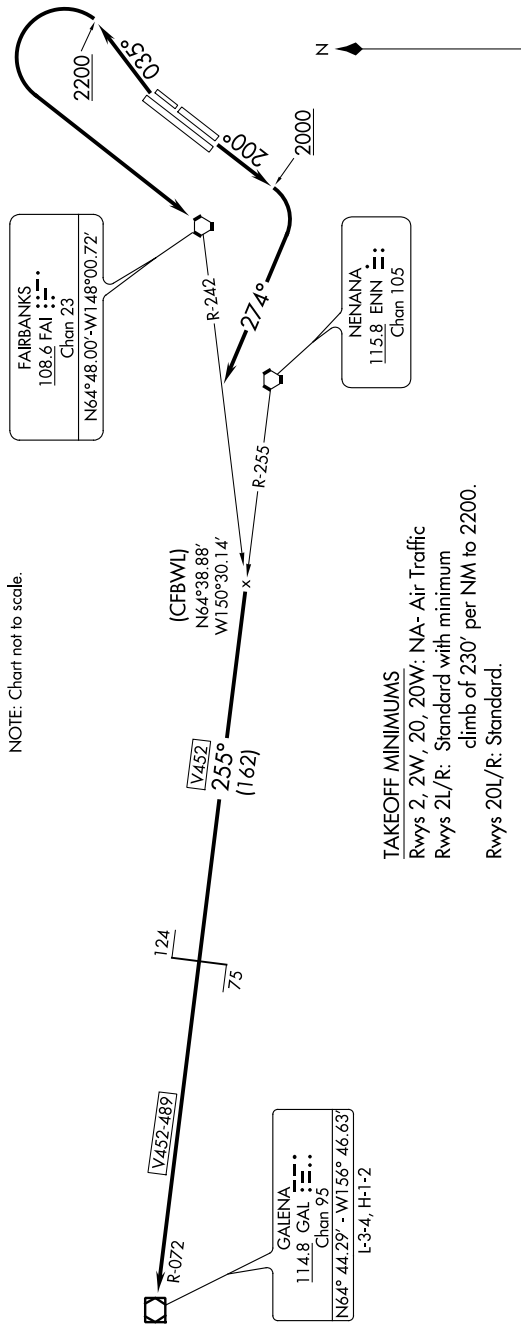
ATIS 124.4
CLNC DEL 127.6
GND CON 121.9
FAIRBANKS TOWER
118.3 257.8
FAIRBANKS DEP CON
125.35 363.2

DEPARTURE ROUTE DESCRIPTION

TAKEOFF RUNWAYS 2L/R: Climb heading 035° to 2200, then left turn direct FAI VORTAC, thence . . .
TAKEOFF RUNWAYS 20L/R: Climb heading 200° to 2000, then right turn heading 274°, thence . . .

. . . intercept FAI R-242 to ENN R-255, then on ENN R-255 and GAL R-072 to GAL VOR/DME, then continue climb on assigned route and altitude.

NOTE: Chart not to scale.



TAKEOFF MINIMUMS

Rwys 2, 2W, 20, 20W: NA - Air Traffic
Rwys 2L/R: Standard with minimum
climb of 230' per NM to 2200.
Rwys 20L/R: Standard.

NOTE: DME Required

GALENA SIX DEPARTURE

(GLEEN6.GLEEN) 15AUG19

FAIRBANKS, ALASKA

FAIRBANKS INTL (FAI) (PAFA)