

(DRLL3.DRLL) 19227

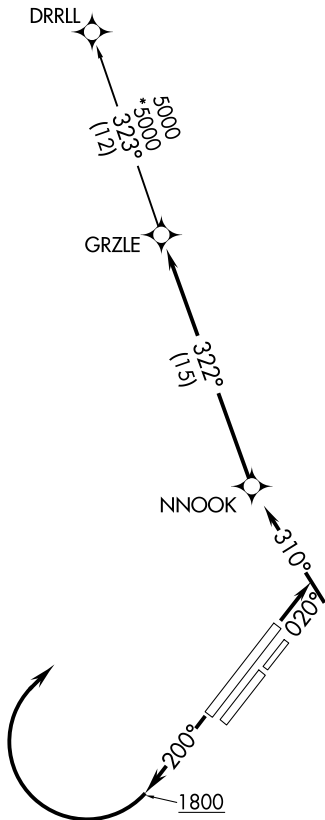
DRLL THREE DEPARTURE (RNAV)

AL-1234 (FAA)

FAIRBANKS INTL (FAI) (PAFA)
FAIRBANKS, ALASKA

ATIS 124.4
CLNC DEL
127.6
GND CON
121.9
FAIRBANKS TOWER
118.3 257.8
FAIRBANKS DEP CON
125.35 363.2

**TOP ALTITUDE:
ASSIGNED BY ATC**



NOTE: GPS required.
NOTE: RNAV-1.

TAKEOFF MINIMUMS

Rwys 2, 2R, 2W, 20, 20L, 20W: NA - Air Traffic.

Rwy 2L: Standard with minimum climb of 290' per NM to 3100.

Rwy 20R: Standard with minimum climb of 270' per NM to 3200.

NOTE: Chart not to scale.



DEPARTURE ROUTE DESCRIPTION

TAKEOFF RUNWAY 2L: Climb heading 020° to intercept course 310° to NNOOK, then on track 322° to GRZLE, thence . . .

TAKEOFF RUNWAY 20R: Climb heading 200° to 1800, then climbing right turn direct NNOOK, then on track 322° to GRZLE, thence . . .

. . . on DRRLL TRANSITION (DRLL3.DRLL), maintain ATC assigned altitude, expect filed altitude ten minutes after departure.

DRLL TRANSITION (DRLL3.DRLL)

DRLL THREE DEPARTURE (RNAV)

(DRLL3.DRLL) 15AUG19

FAIRBANKS, ALASKA
FAIRBANKS INTL (FAI) (PAFA)

AK, 25 FEB 2021 to 22 APR 2021

AK, 25 FEB 2021 to 22 APR 2021