

APP CRS <b>088°</b>	Rwy Idg TDZE Apt Elev	<b>N/A</b> <b>N/A</b> <b>908</b>
------------------------	-----------------------------	----------------------------------------

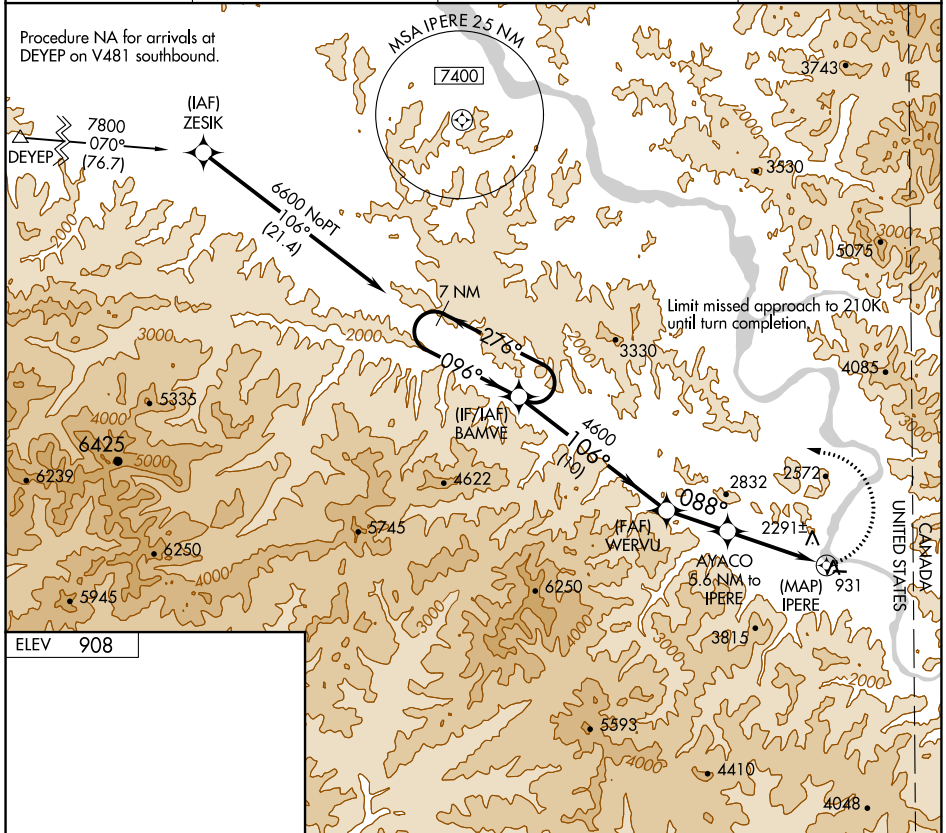
# RNAV (GPS)-A

## EAGLE (EAA) (PAEG)

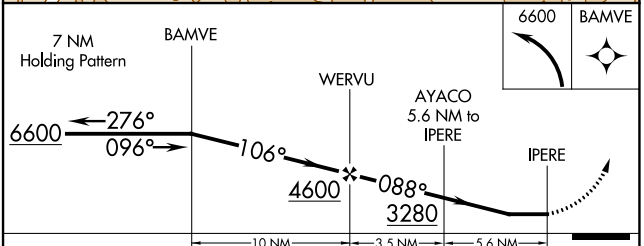
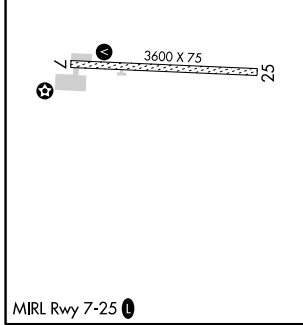
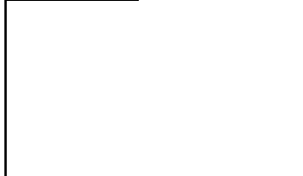
**⚠** When local altimeter setting not received, procedure NA.  
**⚠** DME/DME RNP-0.3 NA. Helicopter visibility reduction below 1 SM not authorized. Procedure NA at night.  
**❄** -49°C  
 Circling NA north of Rwy 7-25.

**MISSED APPROACH:** Climbing left turn to 6600 direct BAMVE and hold, continue climb-in-hold to 6600.

ASOS <b>135.55</b>	ANCHORAGE CENTER <b>135.3 322.5</b>	NORTHWAY RADIO <b>122.3</b>	UNICOM <b>122.8 (CTAF)</b>
-----------------------	----------------------------------------	--------------------------------	-------------------------------



ELEV **908**



CATEGORY	A	B	C	D
CIRCLING	2720-1¼ 1812 (1900-1¼)	2720-1½ 1812 (1900-1½)	2720-3 1812 (1900-3)	NA

AK, 25 FEB 2021 to 22 APR 2021

AK, 25 FEB 2021 to 22 APR 2021