

ILS Z or LOC/DME RWY 6

LOC I-EDF 110.3	APCH CRS 062°	Rwy Idg 10,000 TDZE 174 Arprt Elev 213
---------------------------	-------------------------	---

AL-1196 [USAF]

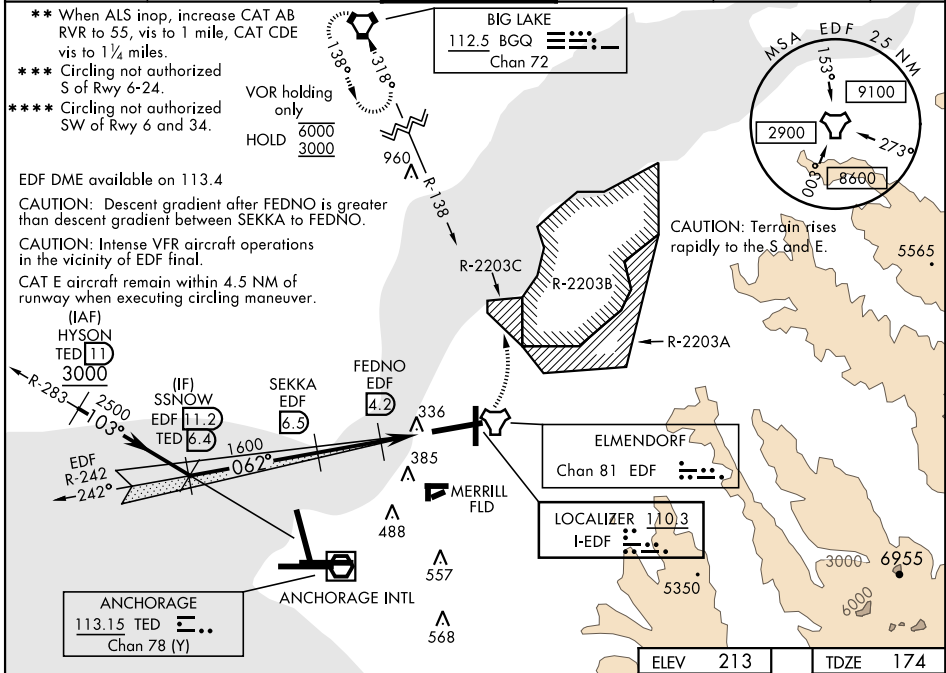
ELMENDORF AFB (PAED)

▼ *When TDZ/CL lights inop increase RVR to 24.
When ALS inop, increase RVR to 40, vis to ¼ mile.

ALSF-1
A1

MISSED APPROACH: Climb to 900, then climbing left turn to 3000 and intercept BGQ R-138 to BGQ and hold.

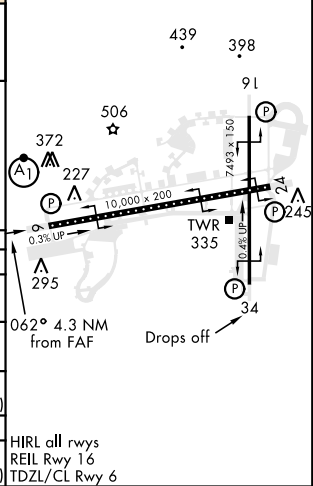
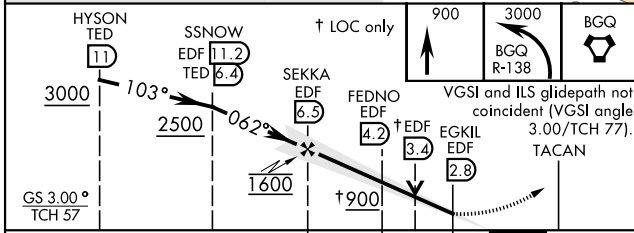
ATIS ★ 124.3 273.5	ANCHORAGE APP CON 118.6 290.5 North 123.8 259.3 South	ELMENDORF TOWER 127.2 352.05	GND CON 121.8 275.8	CLNC DEL 128.8 306.925	PAR
------------------------------	---	--	-------------------------------	----------------------------------	-----



AK, 25 FEB 2021 to 22 APR 2021

AK, 25 FEB 2021 to 22 APR 2021

EMERG SAFE ALT 100 NM 15,300



CATEGORY	A	B	C	D	E
S-ILS 6 *	374/18		200	(200-½)	
S-LOC 6 **	600/24 426 (400-½)		600/40	426	(400-¾)
CIRCLING ***	800-1	587 (600-1)	800-1½ 587 (600-1½)	820-2 607 (700-2)	940-2½ 727 (800-2½)
RWY 34 CIRCLING MINIMUMS					
CIRCLING ****	800-1	587 (600-1)	920-2 707 (800-2)	1020-2½ 807 (900-2½)	1480-3 1267 (1300-3)

ILS Z or LOC/DME RWY 6