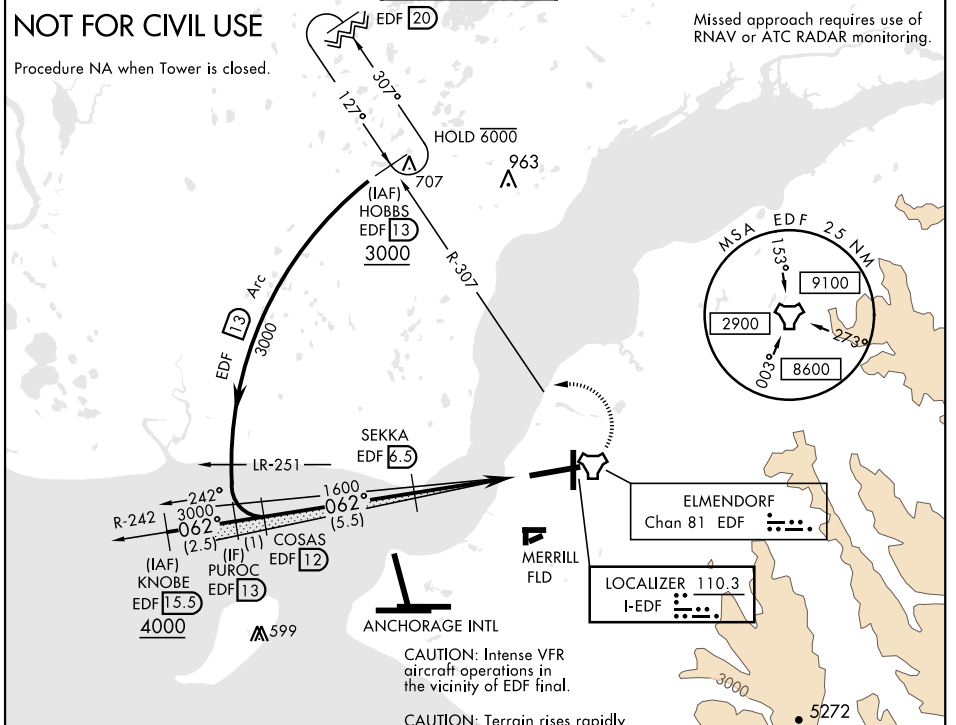


ILS Y RWY 6 (SA CAT I)

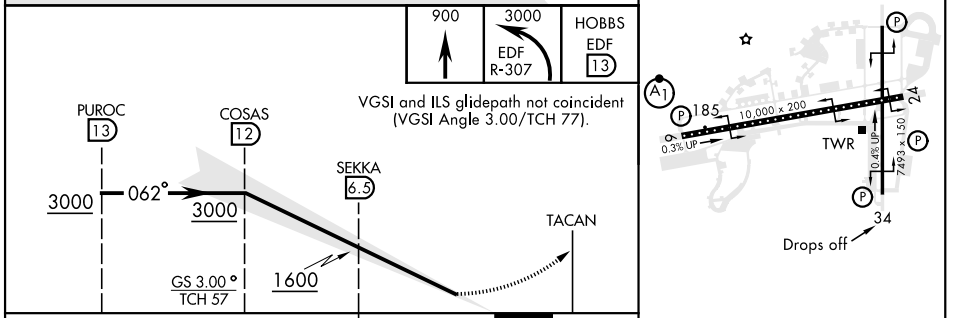
LOC I-EDF 110.3	APCH CRS 062°	Rwy Idg TDZE Arpt Elev 10,000 175 213	AL-1196 [USAF]	ELMENDORF AFB (PAED)
---------------------------	-------------------------	---	----------------	----------------------

DME required. Requires MAJCOM flying authority approval and use of HUD to DA.	ALSIF-1 	MISSED APPROACH: Climb to 900, then climbing left turn to 3000 via EDF R-307 to HOBBS and hold.
--	-------------	---

ATIS ★ 124.3 273.5	ANCHORAGE APP CON 118.6 290.5 North 123.8 259.3 South	TOWER 127.2 352.05	GND CON 121.8 275.8	CLNC DEL 128.8 306.925	PAR
------------------------------	---	------------------------------	-------------------------------	----------------------------------	-----



EMERG SAFE ALT 100 NM 15,300	ELEV 213	TDZE 175
------------------------------	----------	----------



CATEGORY	A	B	C	D	HIRL all rwys REIL Rwy 16 TDZL/CL Rwy 6
S-ILS 6	RA 138/14	150	DA 325		

ILS Y RWY 6 (SA CAT I)

AK, 25 FEB 2021 to 22 APR 2021

AK, 25 FEB 2021 to 22 APR 2021