

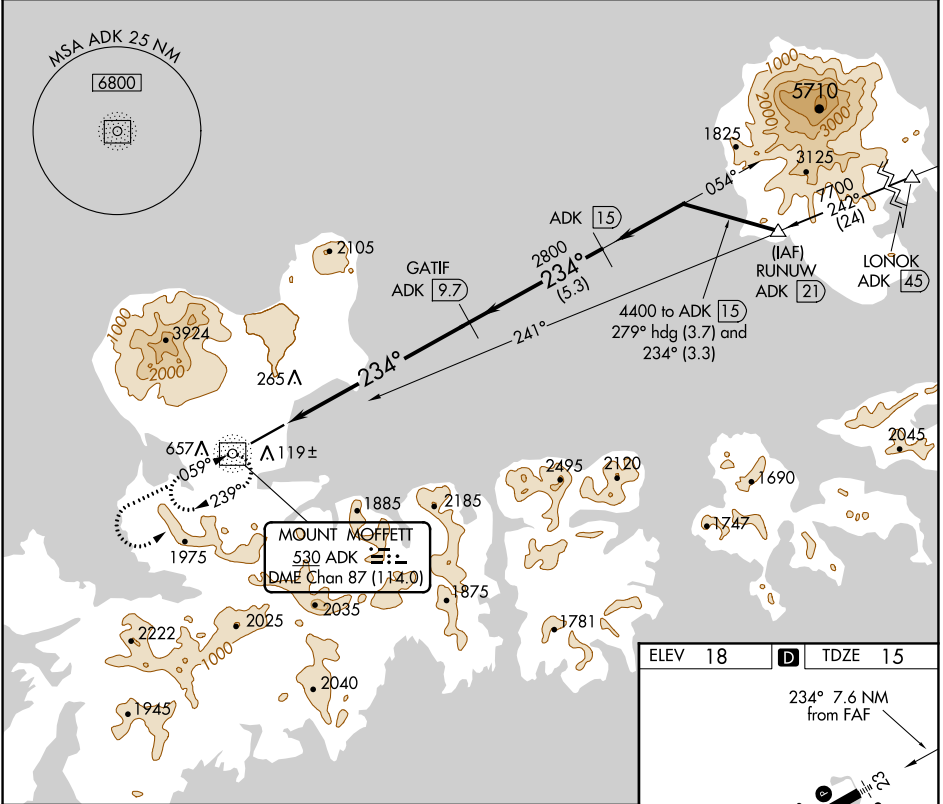
NDB/DME ADK 530	APP CRS 234°	Rwy ldg 6190
Chan 87 (114.0)		TDZE 15
		Apt Elev 18

NDB/DME RWY 23

ADAK (ADK)(PADK)

 Circling not authorized at night.	MALS 	MISSED APPROACH: Climb to 5000 via direct ADK NDB/DME and ADK NDB/DME 234° bearing, then climbing left turn to 9000 direct ADK NDB/DME and hold.

AWOS-3P 134.5	ANCHORAGE CENTER 126.4 254.3	CTAF 122.9
-------------------------	--	----------------------



AK, 25 FEB 2021 to 22 APR 2021

AK, 25 FEB 2021 to 22 APR 2021

