

APP CRS	Rwy Idg	N/A
<b>043°</b>	TDZE	N/A
	Apt Elev	<b>54</b>

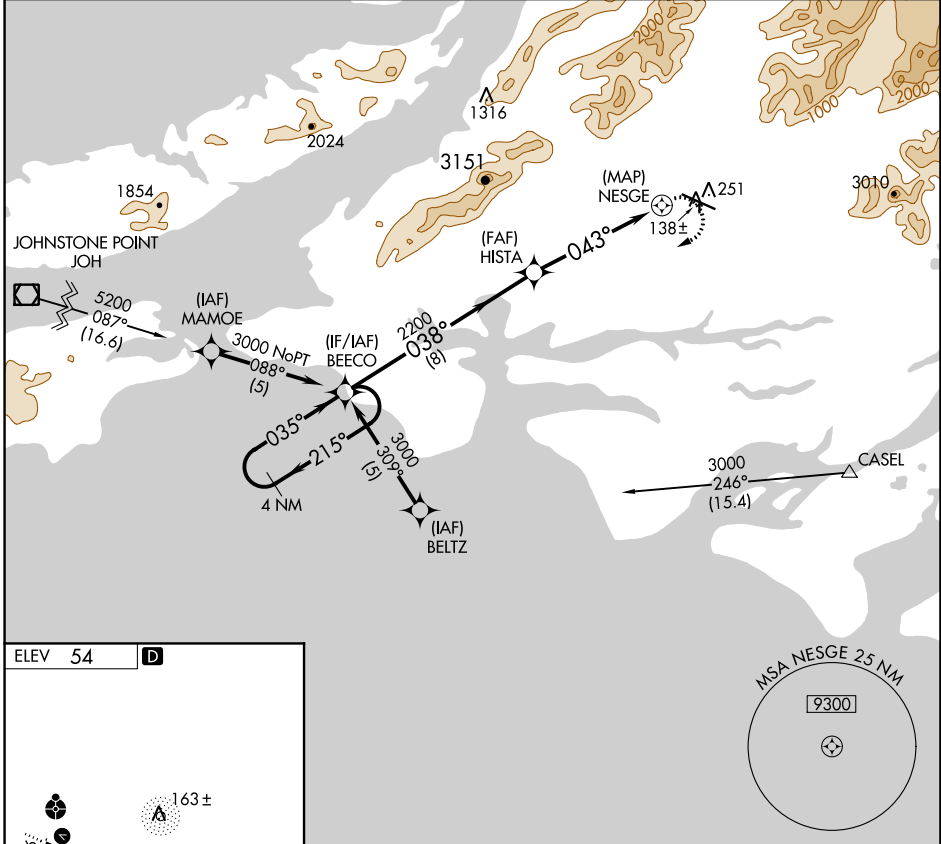
# RNAV (GPS)-B

MERLE K (MUDHOLE) SMITH (CDV)(PACV)

**NA** DME/DME RNP-0.3 NA. Circling to Rwy 16/34 NA at night. When local altimeter setting not received use Middleton Island altimeter setting and increase all MDA 180 feet. Circling NA north of Rwy 9/27. Helicopter visibility reduction below 1 SM not authorized.

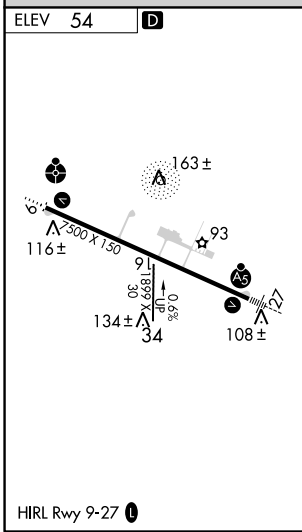
**MISSED APPROACH:** Climbing right turn to 3000 direct BEECO and hold.

ASOS <b>134.8</b>	ANCHORAGE CENTER <b>119.3 133.6 269.4</b>	JUNEAU RADIO <b>122.2 123.6 (CTAF)</b>
----------------------	--	---



AK, 25 FEB 2021 to 22 APR 2021

AK, 25 FEB 2021 to 22 APR 2021



4 NM Holding Pattern BEECO 3000 ← 215° / 035° → HISTA 2200 * 038° / 043° → NESGE	3000 BEECO 			
	8 NM / 5.2 NM			
CATEGORY	A	B	C	D
CIRCLING	500-1 446 (500-1)	520-1 466 (500-1)	520-1½ 466 (500-1½)	620-2 566 (600-2)