

APP CRS 138°	Rwy Idg TDZE Apt Elev	N/A N/A 22
------------------------	-----------------------------	---------------------------------------

RNAV (GPS)-B

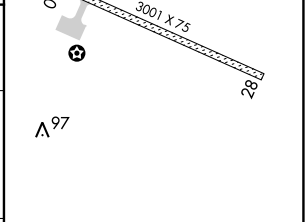
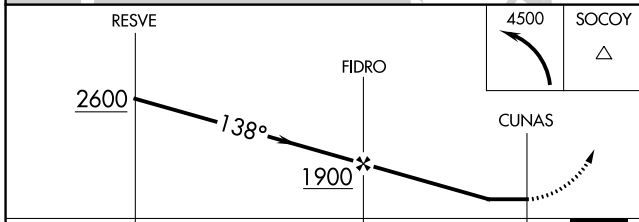
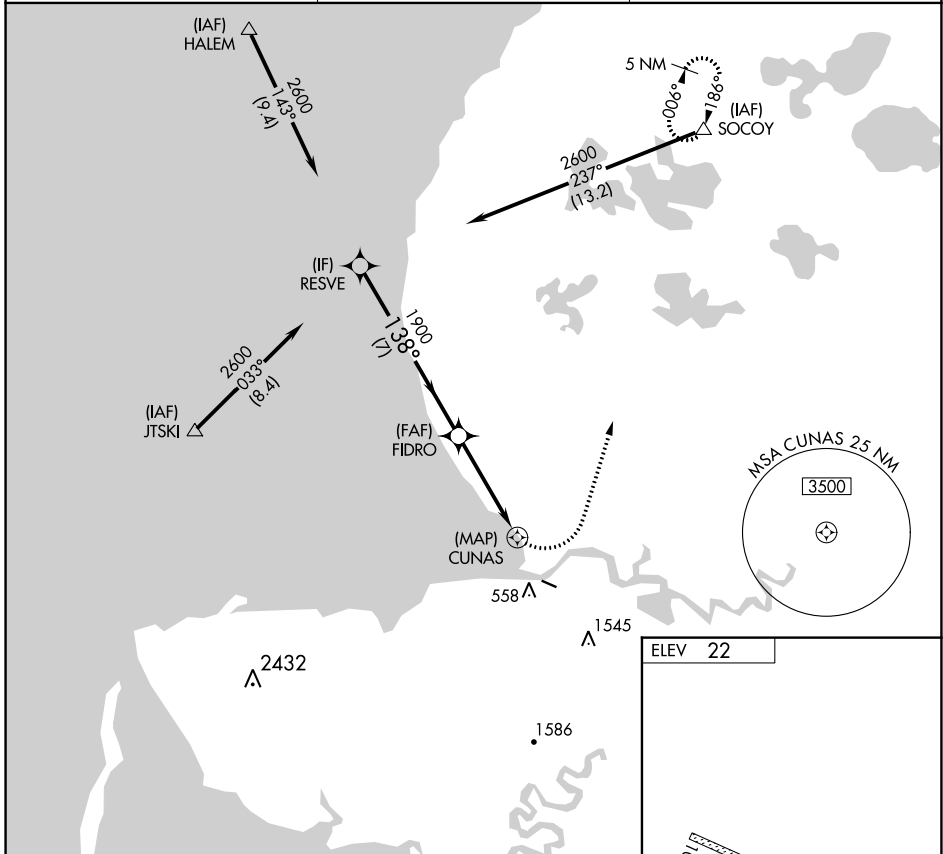
SCAMMON BAY (SCM) (PACM)

⚠ DME/DME RNP-0.3 NA. When local altimeter setting not received, use Hooper Bay altimeter setting and increase all MDA 360 feet. Circling NA south of Rwy 10-28.

⚠ -21°C

MISSED APPROACH: Climbing left turn to 4500 direct SOCOY and hold, continue climb-in-hold to 4500.

AWOS-3P 118.425	ANCHORAGE CENTER 124.5	UNICOM 123.0 (CTAF) 0
---------------------------	----------------------------------	---------------------------------



CATEGORY	A	B	C	D
CIRCLING	760-2¼ 738 (800-2¼)		NA	

MIRL Rwy 10-28 0

AK, 25 FEB 2021 to 22 APR 2021

AK, 25 FEB 2021 to 22 APR 2021