

**TOP ALTITUDE:  
ASSIGNED BY ATC**

ANCHORAGE CENTER  
118.5 278.3  
COLD BAY RADIO  
123.6


NOTE: DME required.

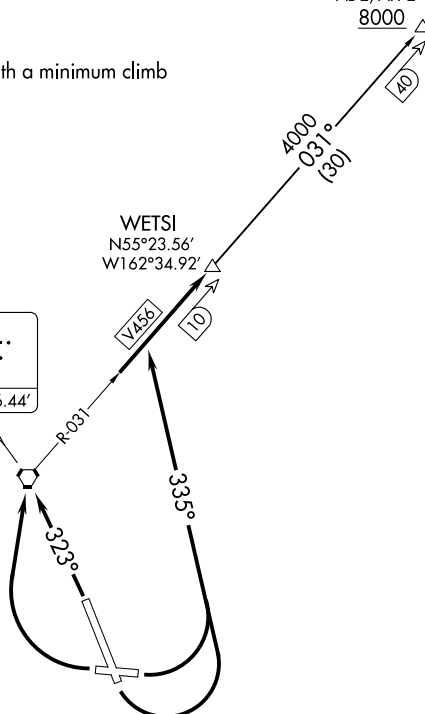
### TAKEOFF MINIMUMS

Rwys 8, 15, 33: Standard.

Rwy 26: 900-2¾ or standard with a minimum climb of 400' per NM to 500.

BINAL  
N55°46.00'  
W161°59.94'  
AL-2, AH-2  
8000

COLD BAY  
112.6 CDB   
Chan 73  
N55°16.04'-W162°46.44'



NOTE: Chart not to scale.



### DEPARTURE ROUTE DESCRIPTION

TAKEOFF RUNWAYS 8, 15: Climbing left turn heading 335°, thence . . . .

TAKEOFF RUNWAY 26: Climbing right turn direct CDB VORTAC, thence . . . .

TAKEOFF RUNWAY 33: Climb heading 323° direct CDB VORTAC, thence . . . .

. . . . intercept CDB VORTAC R-031 to join V456 northeast bound to WETS1 maintain assigned altitude.

BINAL TRANSITION (WETS12.BINAL): From over WETS1 on CDB R-031 to BINAL.