


VORTAC CDB	APP CRS	Rwy Idg	<b>10179</b>
<b>112.6</b>	<b>145°</b>	TDZE	<b>75</b>
Chan <b>73</b>		Apt Elev	<b>100</b>

# VOR RWY 15

COLD BAY (CDB) (PACD)

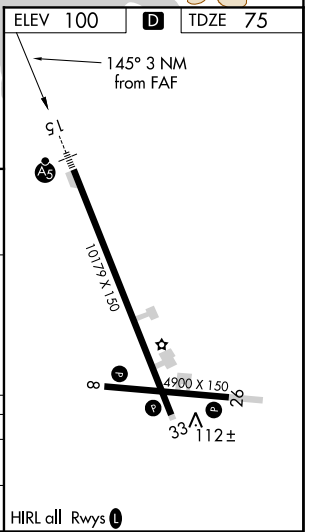
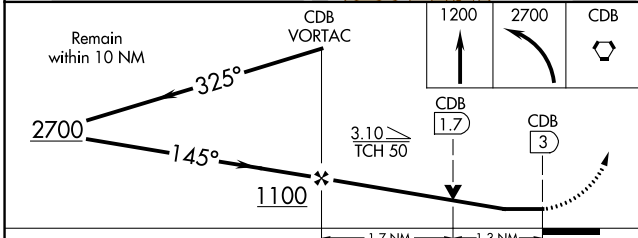
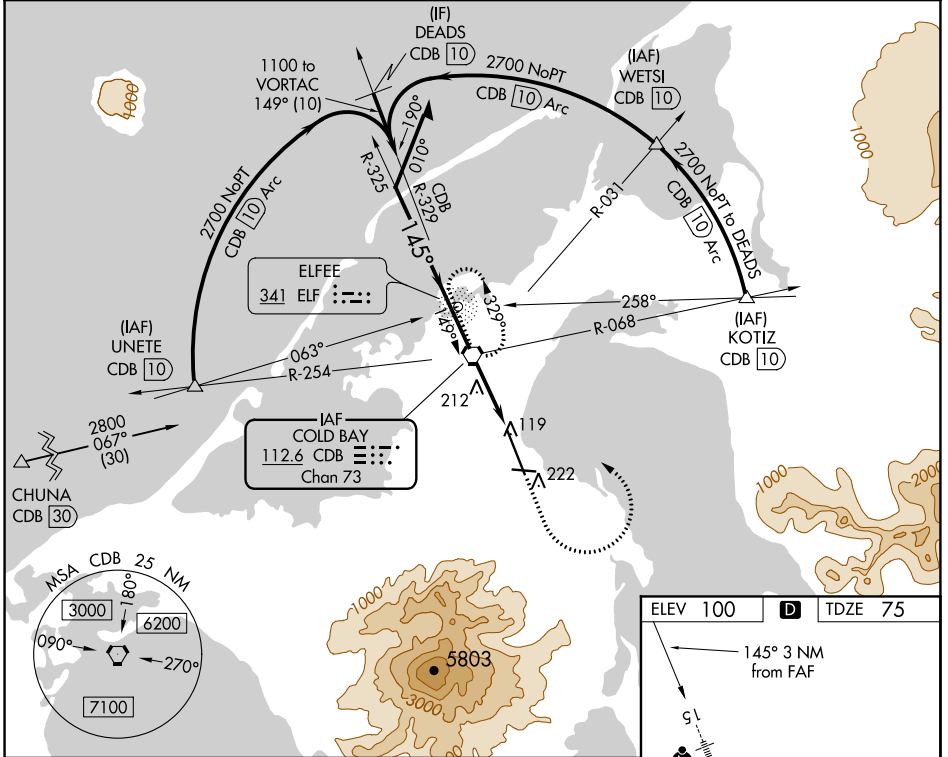
DME required.

**⚠** Circling NA for Cat A southwest of Rwy 15-33 at night.  
 DME values will decrease then increase prior to reaching missed approach point. For inop ALS, increase S-15 Cats C and D visibility to RVR 6000. Circling NA for Cats B/C/D southwest of Rwy 15-33

MALSR  


MISSED APPROACH: Climb to 1200 then climbing left turn to 2700 direct CDB VORTAC and hold; continue climb-in-hold to 2700.

ASOS <b>135.75</b>	ANCHORAGE CENTER <b>118.5 278.3</b>	COLD BAY RADIO★ <b>123.6 (CTAF)</b> 
-----------------------	----------------------------------------	--------------------------------------------------------------------------------------------------------------------------



CATEGORY	A	B	C	D
S-15	480/24	405 (400-½)	480/40	405 (400-¾)
<b>C</b> CIRCLING	540-1 440 (500-1)	560-1 460 (500-1)	560-1½ 460 (500-1½)	860-2½ 760 (800-2½)

HIRL all Rwy's 

AK, 25 FEB 2021 to 22 APR 2021

AK, 25 FEB 2021 to 22 APR 2021