

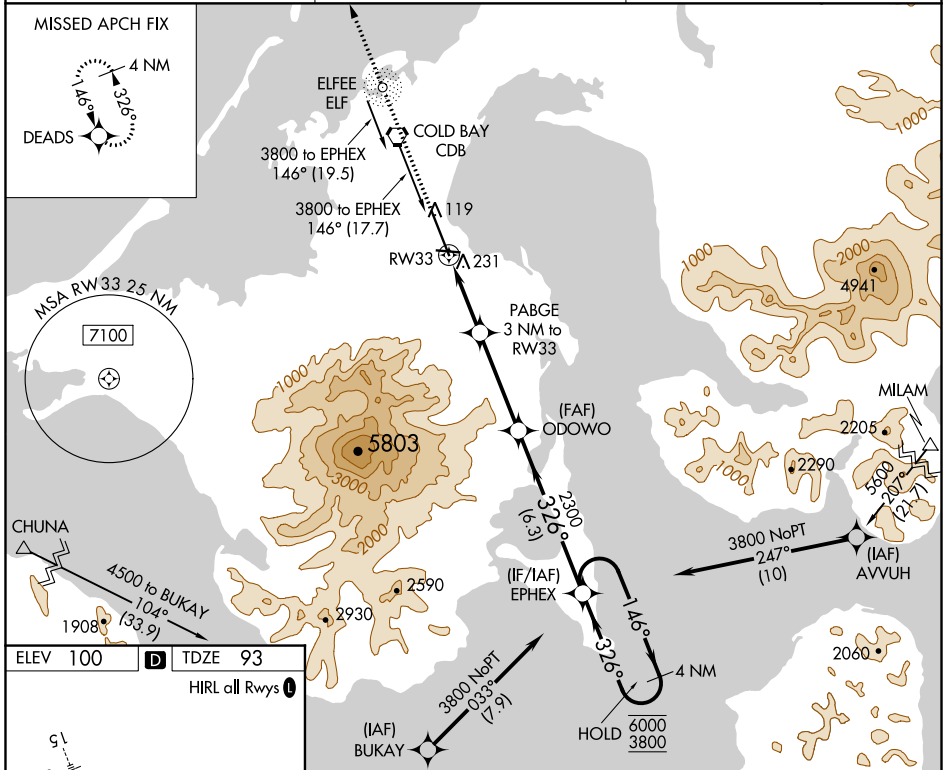
WAAS CH <b>49106</b> <b>W33A</b>	APP CRS <b>326°</b>	Rwy Idg <b>10179</b> TDZE <b>93</b> Apt Elev <b>100</b>
--	------------------------	---

# RNAV (GPS) RWY 33

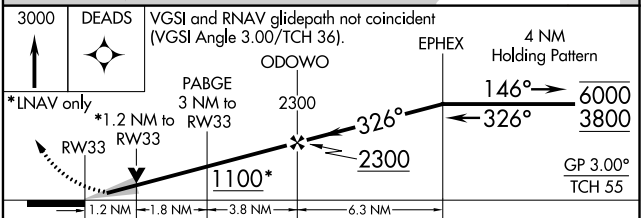
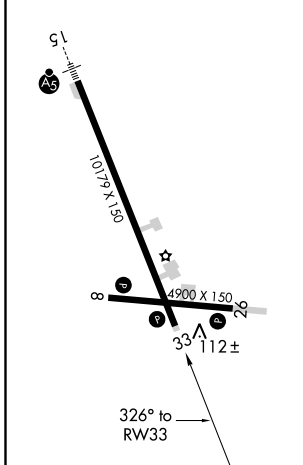
COLD BAY (CDB) (PACD)

RNP APCH.	MISSED APPROACH: Climb to 3000 direct DEADS and hold.
<p>▼ For uncompensated Baro-VNAV systems, LNAV/VNAV NA below -10°C or above 54°C. Circling NA for Cat A southwest of Rwy 15-33 at night. Circling NA for Cat B/C/D southwest of Rwy 15-33.</p>	

ASOS <b>135.75</b>	ANCHORAGE CENTER <b>118.5 278.3</b>	COLD BAY RADIO <b>123.6 (CTAF) 0</b>
-----------------------	--	---



ELEV 100	TDZE 93
HIRL all Rwys	



CATEGORY	A	B	C	D
LPV DA		293- <sup>3</sup> / <sub>4</sub>	200 (200- <sup>3</sup> / <sub>4</sub> )	
LNAV/VNAV DA		392- <sup>7</sup> / <sub>8</sub>	299 (300- <sup>7</sup> / <sub>8</sub> )	
LNAV MDA	500-1	407 (400-1)	500-1 <sup>1</sup> / <sub>8</sub>	407 (400-1 <sup>1</sup> / <sub>8</sub> )
<b>C</b> CIRCLING	540-1 440 (500-1)	560-1 460 (500-1)	560-1 <sup>1</sup> / <sub>2</sub> 460 (500-1 <sup>1</sup> / <sub>2</sub> )	860-2 <sup>1</sup> / <sub>2</sub> 760 (800-2 <sup>1</sup> / <sub>2</sub> )

AK, 25 FEB 2021 to 22 APR 2021

AK, 25 FEB 2021 to 22 APR 2021