

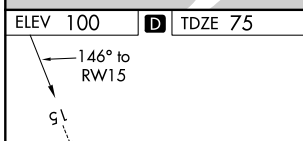
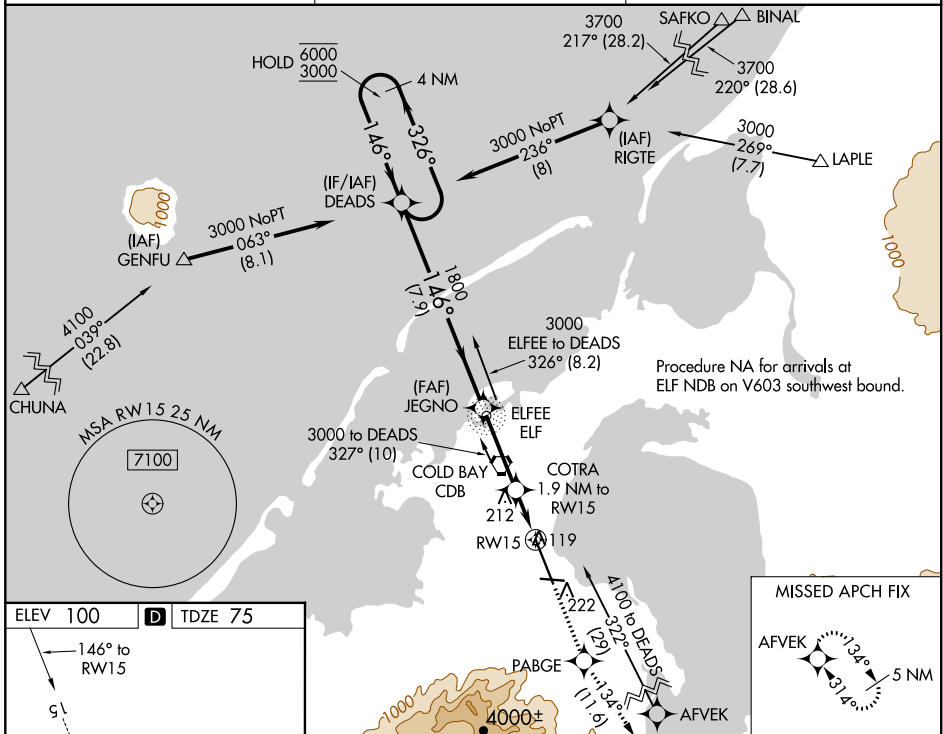
WAAS CH 45612 W15A	APP CRS 146°	Rwy Idg 10179 TDZE 75 Apt Elev 100
--	------------------------	---

RNAV (GPS) RWY 15

COLD BAY (CDB) (PACD)

RNP APCH.	MALSR	MISSED APPROACH: Climb to 4100 direct PABGE and on track 134° to AFVEK and hold, continue climb-in-hold to 4100.
<p>▼ For uncompensated Baro-VNAV systems, LNAV/VNAV NA below -10°C or above 54°C. Circling NA for Cat A southwest of Rwy 15-33 at night. Circling NA for Cats B/C/D southwest of Rwy 15-33. For inop ALS, increase LNAV/VNAV all Cats visibility to RVR 4000 and LNAV Cat C/D visibility to RVR 6000. #RVR 1800 authorized with use of FD or AP or HUD to DA.</p>		

ASOS 135.75	ANCHORAGE CENTER 118.5 278.3	COLD BAY RADIO 123.6 (CTAF)
-----------------------	--	---------------------------------------



ELEV 100	D	TDZE 75
<p>146° to RWY 15</p> <p>10179 X 150</p> <p>4900 X 150</p> <p>33 A 112±</p>		
HIRL cll Rwy 15		

4 NM Holding Pattern		DEADS	JEGNO	4100	PABGE	tr 134°	AFVEK
6000	← 326°	1800	1800	↑	⬠		⬠
3000	→ 146°						
GP 3.10° TCH 55		COTRA 1.9 NM to RW15		*760		*LNAV only	
		7.9 NM		3.2 NM		0.8 NM	
						1.1 NM	
CATEGORY	A	B	C	D			
LPV DA#	275/24			200 (200-½)			
LNAV/VNAV DA	325/24			250 (300-½)			
LNAV MDA	480/24	405 (400-½)	480/40	405 (400-¾)			
CIRCLING	540-1 440 (500-1)	560-1 460 (500-1)	560-1½ 460 (500-1½)	860-2½ 760 (800-2½)			

AK, 25 FEB 2021 to 22 APR 2021

AK, 25 FEB 2021 to 22 APR 2021