

LOC/DME I-BRW 110.5 Chan 42	APP CRS 251°	Rwy Idg 5900 TDZE 46 Apt Elev 49
---	------------------------	---

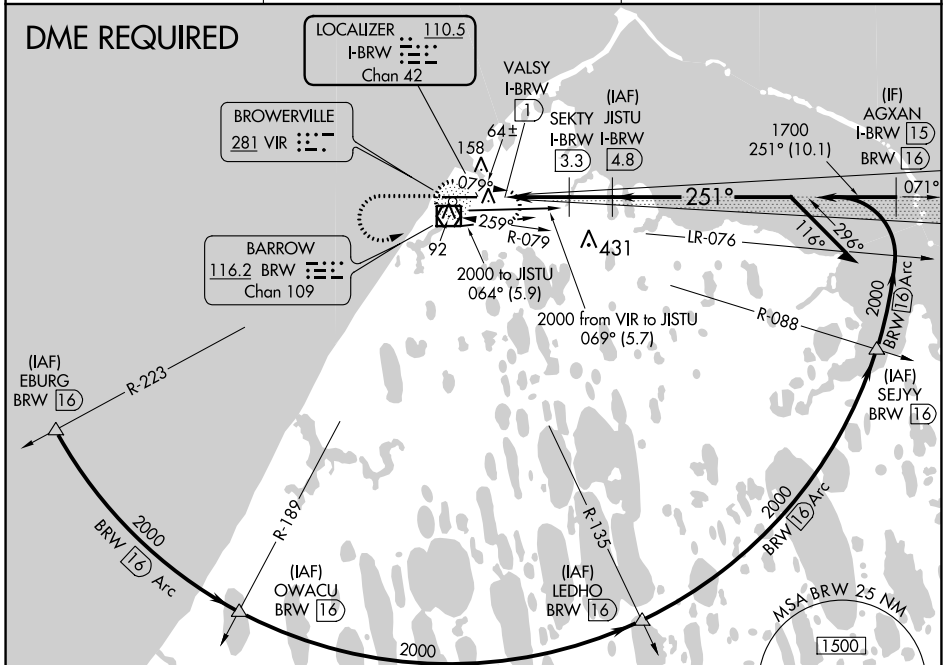
LOC BC RWY 25

WILEY POST-WILL ROGERS MEMORIAL (BRW)(PABR)

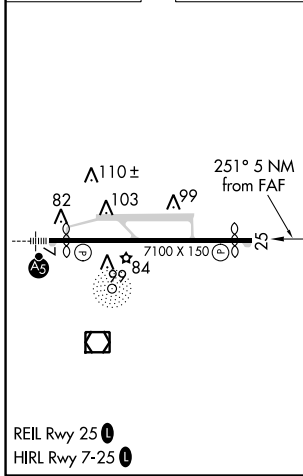
V Circling NA for Cat A north of Rwy 7-25.
A DME required.
 -42°C

MISSED APPROACH: Climb to 1600 then climbing left turn to 2000 direct BRW VOR/DME and hold, continue climb-in-hold 2000.

AFIS 132.15	ANCHORAGE CENTER 135.3 239.25	BARROW RADIO 123.6 (CTAF)
-----------------------	---	-------------------------------------



ELEV 49	D TDZE 46
---------	------------------



CATEGORY	A	B	C	D
S-25	320-1 ³ / ₈ 274 (300-1 ³ / ₈)			
C CIRCLING	440-1 ³ / ₈ 391 (400-1 ³ / ₈)	520-1 ³ / ₈ 471 (500-1 ³ / ₈)	520-1 ¹ / ₂ 471 (500-1 ¹ / ₂)	680-2 631 (700-2)

AK, 25 FEB 2021 to 22 APR 2021

AK, 25 FEB 2021 to 22 APR 2021