

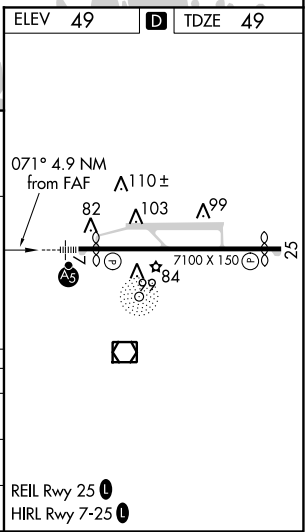
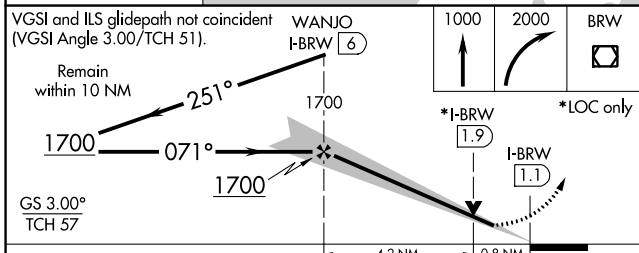
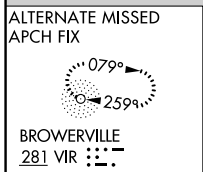
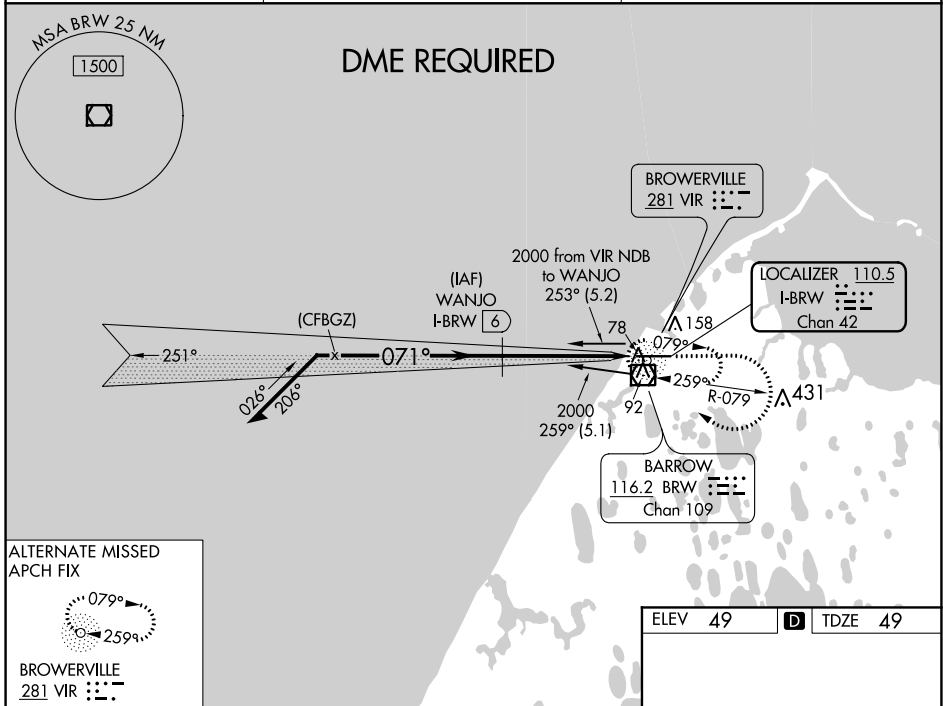
LOC/DME I-BRW <b>110.5</b> Chan <b>42</b>	APP CRS <b>071°</b>	Rwy Idg <b>5900</b> TDZE <b>49</b> Apt Elev <b>49</b>
---	------------------------	---

# ILS or LOC RWY 7

WILEY POST-WILL ROGERS MEMORIAL (BRW)(PABR)

<p><b>⚠</b> Circling NA for Cat A north of Rwy 7-25. Autopilot coupled approach NA below 290. DME required For inop ALS, increase S-LOC 7 Cat C/D visibility to RVR 4500. # RVR 1800 authorized with use of HUD to DA.</p>	<p>MALSR <b>AS</b></p>	<p>MISSED APPROACH: Climb to 1000 then climbing right turn to 2000 direct BRW VOR/DME and hold, continue climb-in-hold to 2000.</p>
--	----------------------------	---

AFIS <b>132.15</b>	ANCHORAGE CENTER <b>135.3 239.25</b>	BARROW RADIO <b>123.6 (CTAF) 0</b>
-----------------------	---	---------------------------------------



CATEGORY	A	B	C	D
S-ILS 7#		249/26	200 (200-½)	
S-LOC 7		340/40	291 (300-¾)	
<b>C</b> CIRCLING	440-1 391 (400-1)	520-1 471 (500-1)	520-1½ 471 (500-1½)	680-2 631 (700-2)

# ILS or LOC RWY 7

AK, 25 FEB 2021 to 22 APR 2021

AK, 25 FEB 2021 to 22 APR 2021