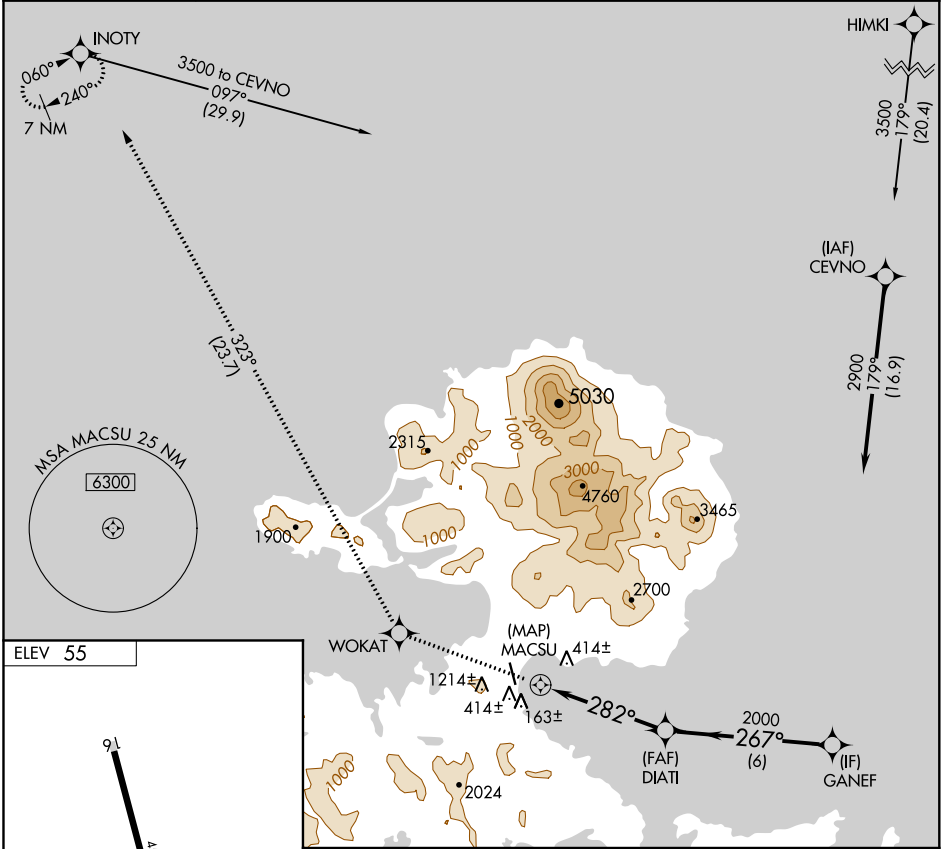


# RNAV (GPS)-A

ATKA (AKA)(PAAK)

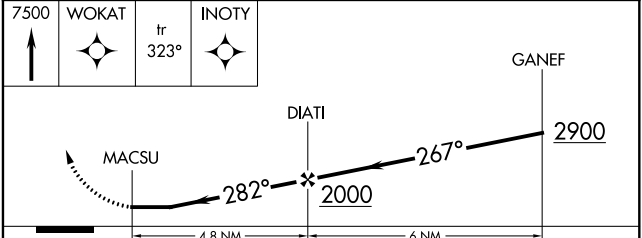
APP CRS <b>282°</b>	Rwy Idg TDZE Apt Elev	<b>N/A</b> <b>N/A</b> <b>55</b>
------------------------	-----------------------------	---------------------------------------

RNP APCH.		MISSED APPROACH: Climb to 7500 direct WOKAT and on track 323° to INOTY and hold. Continue climb-in-hold to 7500.	
<p><b>▼</b> Circling NA west of Rwy 16/34. Procedure NA at night.  <b>▲</b> When local altimeter setting not received, procedure NA.</p>		AWOS-3P <b>135.55</b>	ANCHORAGE CENTER <b>126.4 254.3</b>
		GCO <b>122.15</b>	CTAF <b>122.9</b>



ELEV 55

REIL Rws 16 and 34  
MIRL Rwy 16-34



CATEGORY	A	B	C	D
CIRCLING	1280-1¼ 1225 (1300-1¼)	1280-1½ 1225 (1300-1½)	1280-3 1225 (1300-3)	NA

AK, 25 FEB 2021 to 22 APR 2021

AK, 25 FEB 2021 to 22 APR 2021