

APP CRS	Rwy Idg	<b>9211</b>
<b>228°</b>	TDZE	<b>9</b>
	Apt Elev	<b>32</b>

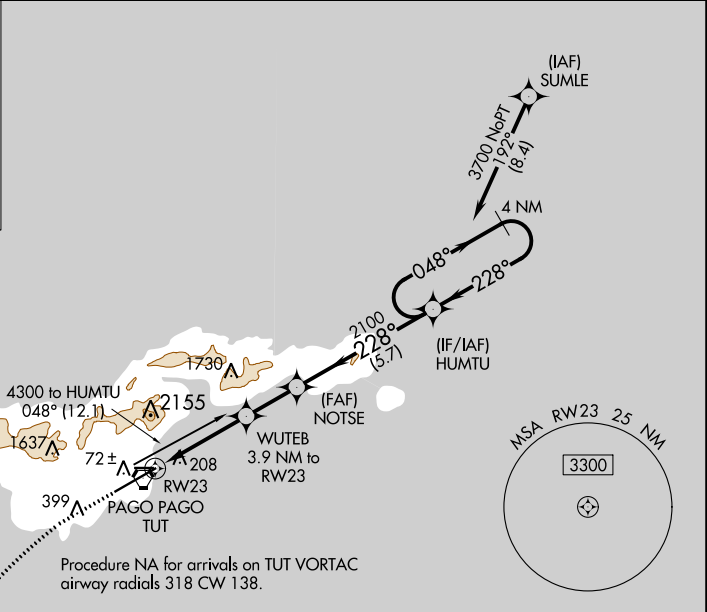
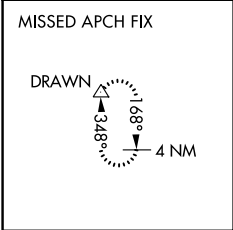
# RNAV (GPS) RWY 23

PAGO PAGO INTL (PPG) (NSTU)

RNP APCH.  
 For uncompensated Baro-VNAV systems, LNAV/VNAV NA below 22°C or above 54°C. When local altimeter setting not received, procedure NA. Circling NA northwest of Rwy 5-23.

MISSED APPROACH: Climb to 500 then climbing left turn to 4000 direct DRAWN and hold.

AWOS-3PT <b>127.925</b>	FALEOLO APP CON <b>118.1 6.553 (HF)</b>	CTAF <b>122.9</b>	<b>118.3</b>
----------------------------	--	----------------------	--------------

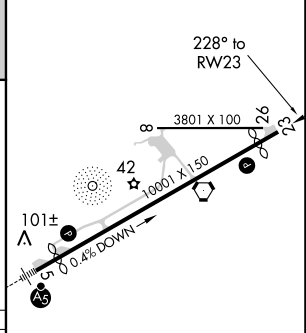
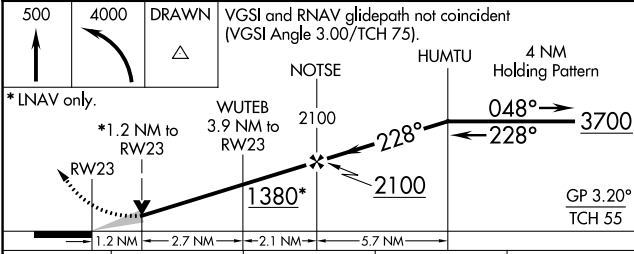


PAC, 25 FEB 2021 to 22 APR 2021

PAC, 25 FEB 2021 to 22 APR 2021



ELEV 32	TDZE 9
---------	--------



CATEGORY	A	B	C	D
LNAV/VNAV DA	489-1 <sup>3</sup> / <sub>8</sub> 480 (500-1 <sup>3</sup> / <sub>8</sub> )			
LNAV MDA	460-1	451 (500-1)	460-1 <sup>3</sup> / <sub>8</sub>	451 (500-1 <sup>3</sup> / <sub>8</sub> )
CIRCLING	520-1 488 (500-1)	700-1 668 (700-1)	820-2 <sup>1</sup> / <sub>4</sub> 788 (800-2 <sup>1</sup> / <sub>4</sub> )	860-2 <sup>3</sup> / <sub>4</sub> 828 (900-2 <sup>3</sup> / <sub>4</sub> )

HIRL Rwy 5-23 and 8-26