

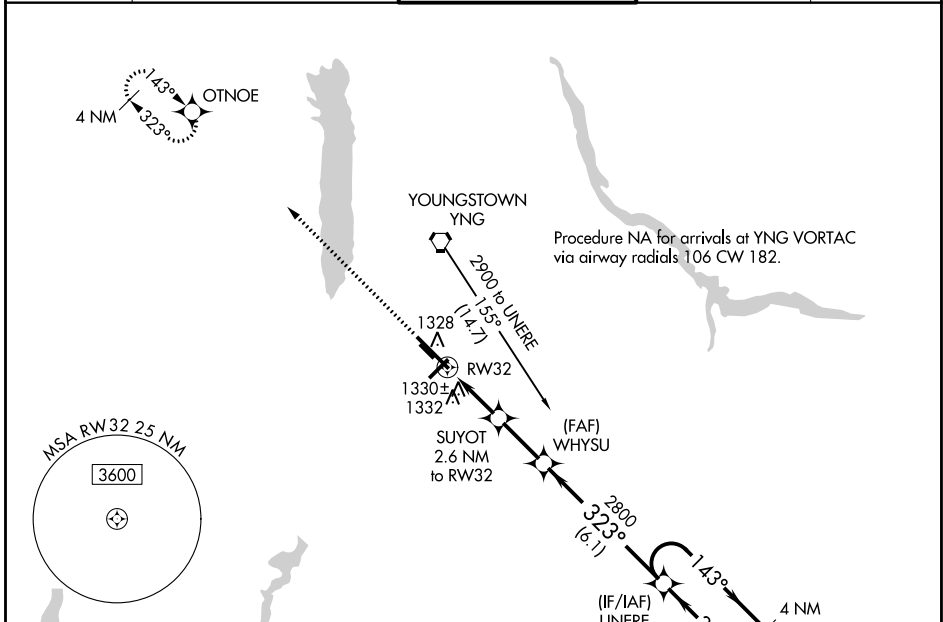
WAAS CH <b>97406</b> <b>W32A</b>	APP CRS <b>323°</b>	Rwy Idg TDZE Apt Elev	<b>9003</b> <b>1186</b> <b>1192</b>
--	------------------------	-----------------------------	---

# RNAV (GPS) RWY 32

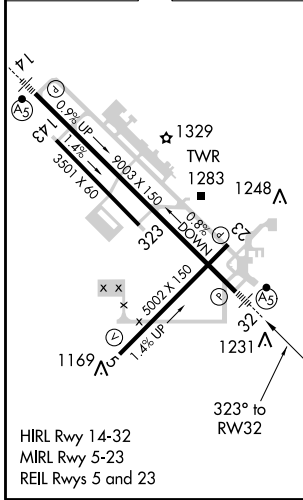
YOUNGSTOWN-WARREN RGNL (YNG)

RNP APCH.		MALSR	MISSED APPROACH: Climb to 2900 direct OTNOE and hold.
⚠ For uncompensated Baro-VNAV systems, LNAV/VNAV NA below -17°C or above 46°C. For inop ALS, increase LPV all Cats visibility to RVR 5000 and LNAV Cat D visibility to RVR 6000. Circling Rwy 5 NA at night.			

ATIS <b>123.75</b>	YOUNGSTOWN APP CON * <b>133.95 322.3</b>	YOUNGSTOWN TOWER <b>119.5 263.0</b>	GND CON <b>121.9 275.8</b>	CLNC DEL <b>118.25</b>
-----------------------	---	--	-------------------------------	---------------------------



ELEV 1192	<b>D</b>	TDZE 1186
-----------	----------	-----------



YOUNGSTOWN-WARREN, OHIO  
Orig-E 26MAR20

2900 OTNOE *LNAV only *1.1 NM to RW32 RW32 SUYOT 2.6 NM to RW32 WHYSU 2800 UNERE 4 NM Holding Pattern 143° → 2900 ← 323° 2900 GP 3.00° TCH 35				
CATEGORY LPV DA LNAV/VNAV DA LNAV MDA <b>C</b> CIRCLING	A 1458/24 1639/60 1580/24 1640-1 448 (500-1)	B 272 (300-½) 453 (500-1½) 394 (400-½) 1660-1 468 (500-1)	C 453 (500-1½) 1740-1½ 548 (600-1½)	D 1580/50 394 (400-1) 1760-2 568 (600-2)

41°16'N-80°41'W

# YOUNGSTOWN-WARREN RGNL (YNG)

## RNAV (GPS) RWY 32

EC-2, 25 FEB 2021 to 25 MAR 2021

EC-2, 25 FEB 2021 to 25 MAR 2021