

WAAS CH <b>70614</b> <b>W17A</b>	APP CRS <b>172°</b>	Rwy Idg TDZE Apt Elev	<b>5502</b> <b>2176</b> <b>2189</b>
--	------------------------	-----------------------------	---

# RNAV (GPS) RWY 17

WEST WOODWARD (WWR)

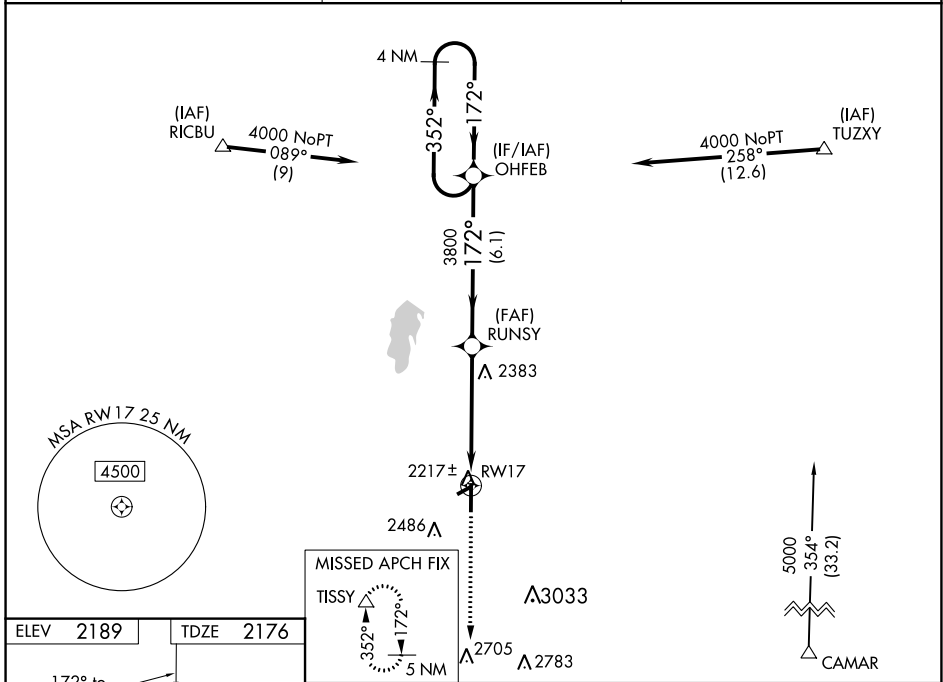
RNP APCH

Baro-VNAV and VDP NA when using Gage altimeter setting. For uncompensated Baro-VNAV systems, LNAV/VNAV NA below -19°C or above 54°C. When local altimeter setting not received, use Gage altimeter setting and increase all DA/MDA 40 feet. Inop table does not apply. Circling Rwy 5, 23 NA at night.

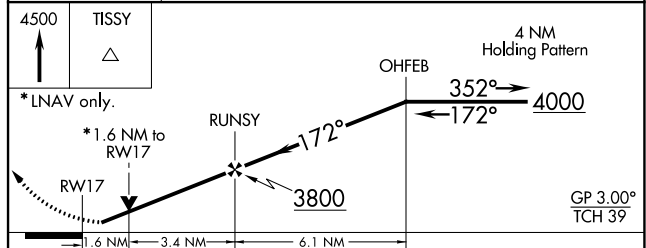
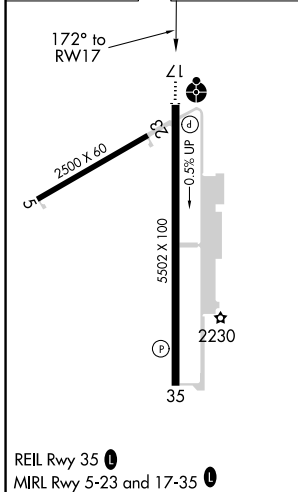
ODALS

MISSED APPROACH: Climb to 4500 direct TISSY and hold.

AWOS-3 <b>118.425</b>	KANSAS CITY CENTER <b>126.95 379.2</b>	UNICOM <b>122.8 (CTAF)</b>
--------------------------	---	-------------------------------



ELEV 2189	TDZE 2176
-----------	-----------



CATEGORY	A	B	C	D
LPV DA		2426-1	250 (300-1)	
LNAV/VNAV DA		2572-1½	396 (400-1½)	
LNAV MDA	2700-1	524 (600-1)	2700-1½ 524 (600-1½)	2700-1¾ 524 (600-1¾)
CIRCLING	2700-1	511 (600-1)	2860-2 671 (700-2)	2860-2¼ 671 (700-2¼)

SC-1, 25 FEB 2021 to 25 MAR 2021

SC-1, 25 FEB 2021 to 25 MAR 2021