

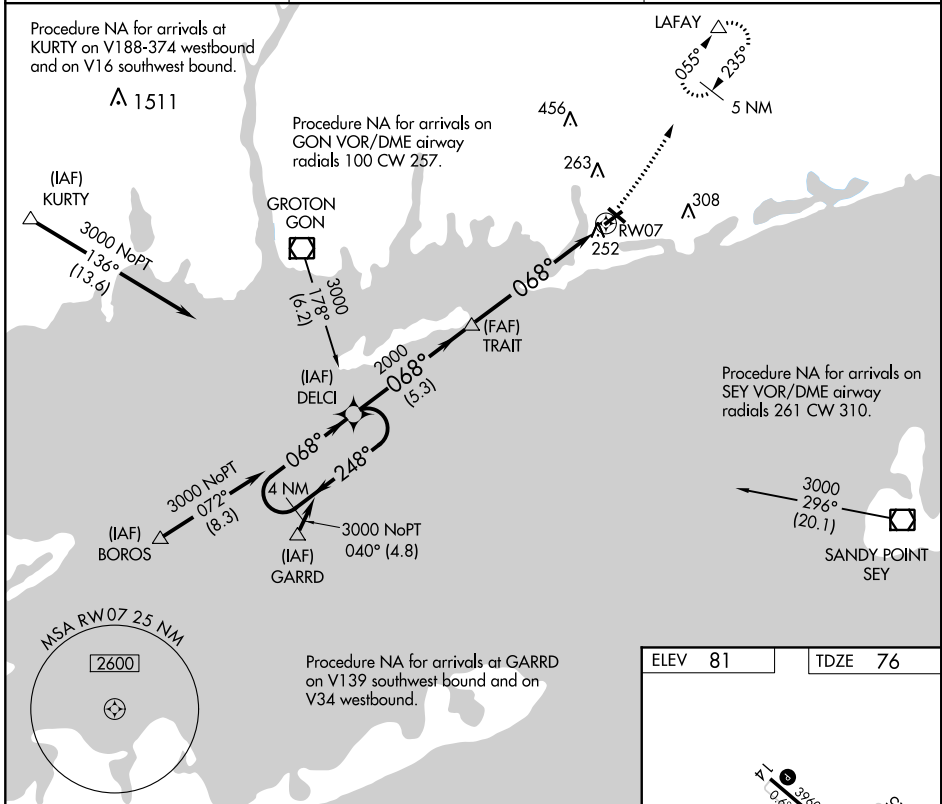
APP CRS	Rwy Idg	4010
068°	TDZE	76
	Apt Elev	81

RNAV (GPS) RWY 7

WESTERLY STATE (WST)

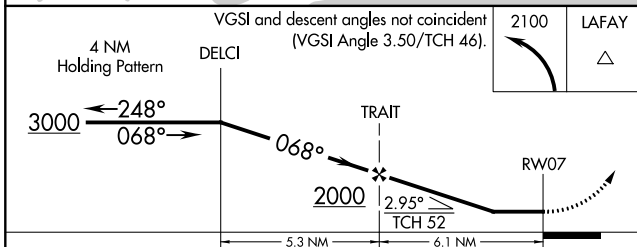
▼	Inoperative table does not apply. DME/DME RNP-0.3 NA. Rwy 7 Straight-in and Circling and Circling Rwy 14 and 32 NA at night.	MALSF 	MISSED APPROACH: Climbing left turn to 2100 direct LAFAY and hold.
----------	---	------------------	---

ASOS 132.375	PROVIDENCE APP CON ★ 119.45 319.2	UNICOM 123.0 (CTAF) 0
------------------------	---	---------------------------------

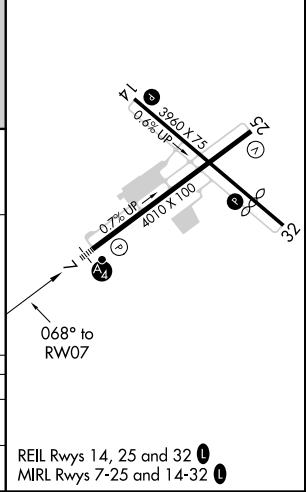


NE-1, 25 FEB 2021 to 25 MAR 2021

NE-1, 25 FEB 2021 to 25 MAR 2021



ELEV 81	TDZE 76
---------	---------



CATEGORY	A	B	C	D
LNAV MDA	520-1	444 (500-1)	520-1½ 444 (500-1½)	520-1½ 444 (500-1½)
CIRCLING	580-1	499 (500-1)	580-1½ 499 (500-1½)	720-2 639 (700-2)

REIL Rwy 14, 25 and 32 **0**

MRL Rwy 7-25 and 14-32 **0**