

# RNAV (GPS) RWY 34

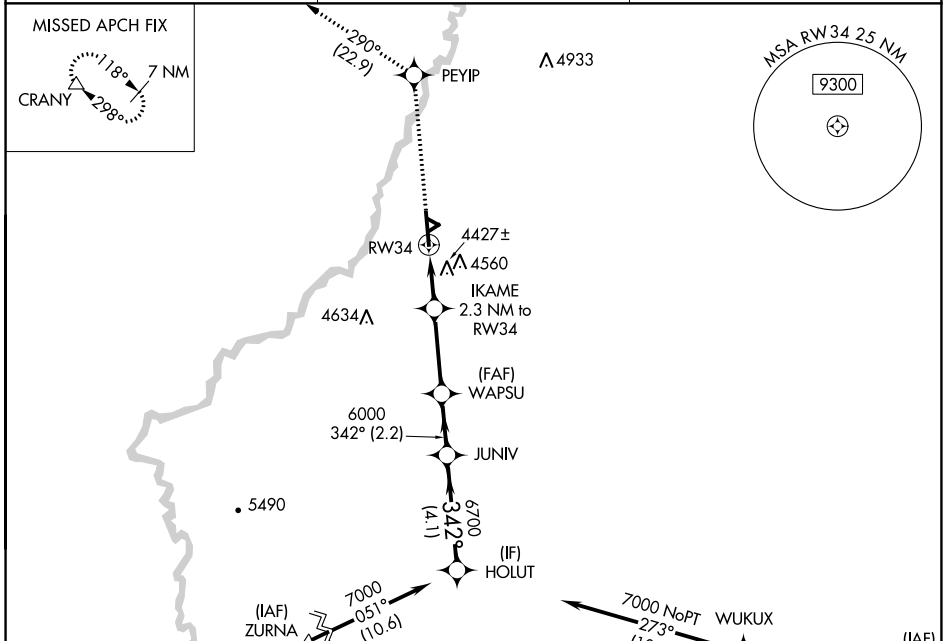
WORLAND MUNI (WRL)

APP CRS	Rwy Idg	<b>7000</b>
<b>342°</b>	TDZE	<b>4252</b>
	Apt Elev	<b>4252</b>

**⚠** When local altimeter setting not received, use Greybull altimeter setting and increase all MDA 140 feet, and all visibilities ½ mile. DME/DME RNP-0.3 NA. Helicopter visibility reduction below ¾ SM NA.

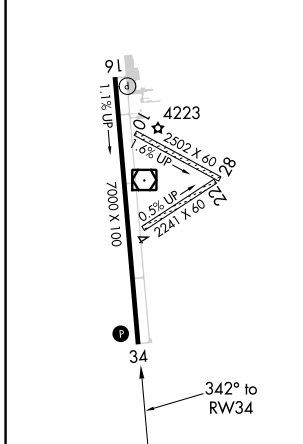
**⚠** MISSED APPROACH: Climb to 8500 direct PEYIP and on track 290° to CRANY and hold.

ASOS <b>135.475</b>	SALT LAKE CENTER <b>133.25 285.6</b>	UNICOM <b>123.05 (CTAF) 0</b>
------------------------	---	----------------------------------



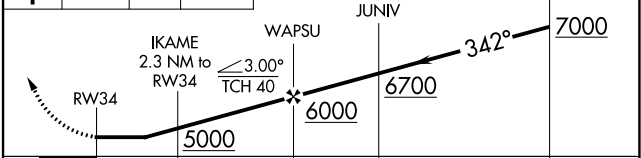
ELEV 4252	<b>D</b>	TDZE 4252
-----------	----------	-----------

REIL Rws 16 and 34 **Ⓛ**  
MIRL Rwy 16-34 **Ⓛ**



Procedure NA for arrivals at ZURNA on V319 southbound and at JTIP on V401 eastbound.

8500	PEYIP	tr 290°	CRANY
↑	⬠	△	



CATEGORY	A	B	C	D
LNAV MDA	4680-1	428 (500-1)	4680-1¼	428 (500-1¼)
CIRCLING	4880-1 628 (700-1)	4900-1 648 (700-1)	4900-1¾ 648 (700-1¾)	4900-2 648 (700-2)

NW-1, 25 FEB 2021 to 25 MAR 2021

NW-1, 25 FEB 2021 to 25 MAR 2021